

WILLISTON, FLORIDA

AL-6898 (FAA)

# RNAV (GPS) RWY 5

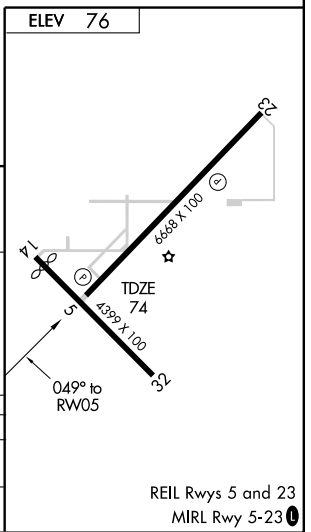
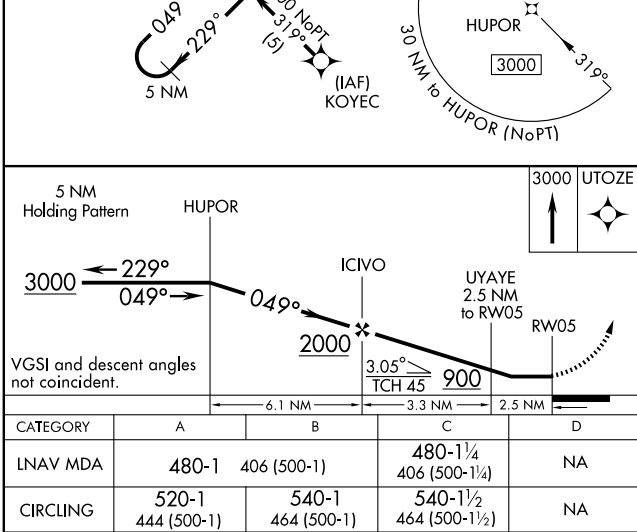
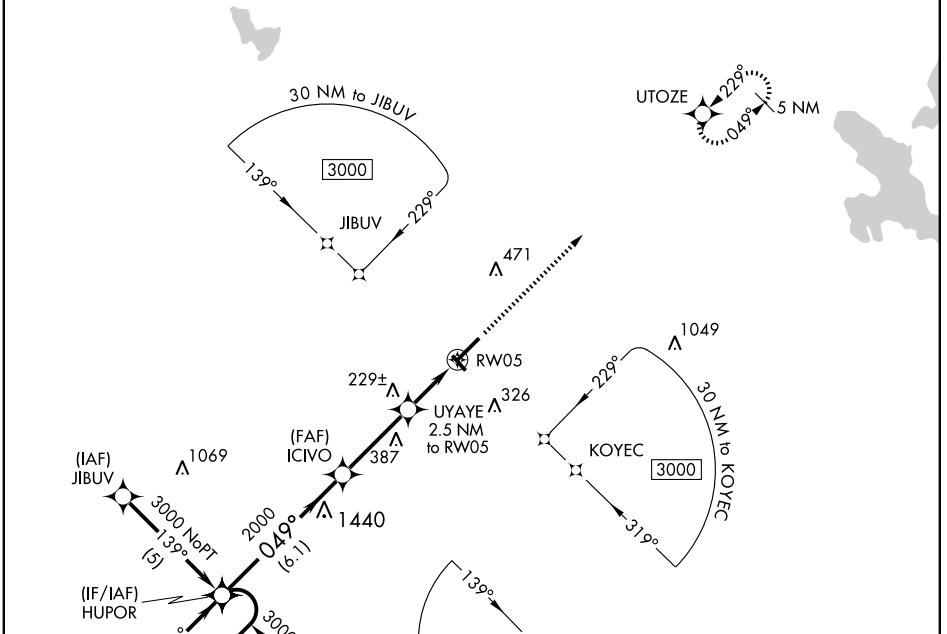
WILLISTON MUNI (X60)

APP CRS	Rwy Idg	<b>6668</b>
<b>049°</b>	TDZE	<b>74</b>
	Apt Elev	<b>76</b>

**⚠** If local altimeter setting not received, use Ocala altimeter setting and increase all MDAs 60 feet. Procedure NA at night.  
**⚠** NA DME/DME RNP-0.3 NA. Visibility reduction by helicopters NA.

**MISSED APPROACH:** Climb to 3000 direct UTOZE and hold.

AWOS-3 <b>118.425</b>	JACKSONVILLE APP CON <b>118.6 251.15</b>	UNICOM <b>122.8 (CTAF) 0</b>
--------------------------	---	---------------------------------



CATEGORY	A	B	C	D
LNVA MDA	480-1	406 (500-1)	480-1¼ 406 (500-1¼)	NA
CIRCLING	520-1 444 (500-1)	540-1 464 (500-1)	540-1½ 464 (500-1½)	NA

REIL Rws 5 and 23  
MIRL Rwy 5-23

SE-3, 22 OCT 2009 to 19 NOV 2009

SE-3, 22 OCT 2009 to 19 NOV 2009

WILLISTON, FLORIDA  
Orig 09295

29° 21' N - 82° 28' W

# WILLISTON MUNI (X60) RNAV (GPS) RWY 5