

RNAV (GPS) RWY 23

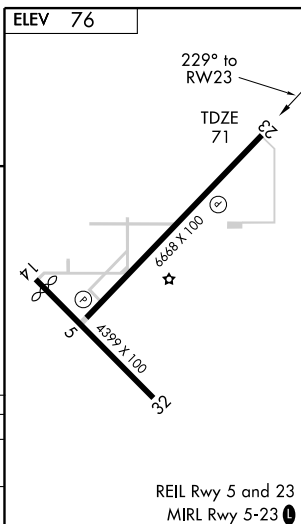
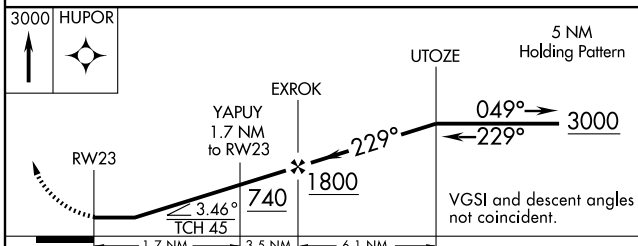
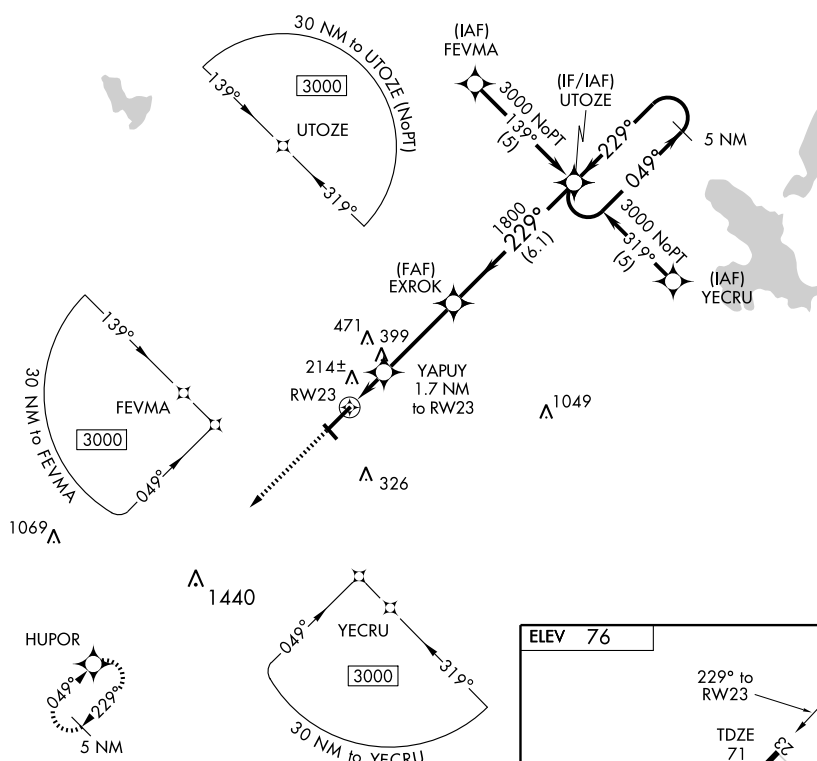
WILLISTON MUNI (X60)

APP CRS 229°	Rwy Idg 6668
	TDZE 71
	Apt Elev 76

▼ If local altimeter setting not received, use Ocala altimeter setting and increase all MDAs 60 feet. DME/DME
▲ NA RNP-0.3 NA. Visibility reduction by helicopters NA.

MISSED APPROACH: Climb to 3000 direct HUPOR and hold.

AWOS-3 118.425	JACKSONVILLE APP CON 118.6 251.15	UNICOM 122.8 (CTAF) 0
--------------------------	---	---------------------------------



CATEGORY	A	B	C	D
LNVA MDA	480-1	409 (500-1)	480-1¼ 409 (500-1¼)	NA
CIRCLING	520-1 444 (500-1)	540-1 464 (500-1)	540-1½ 464 (500-1½)	NA

SE-3, 22 OCT 2009 to 19 NOV 2009

SE-3, 22 OCT 2009 to 19 NOV 2009