

JACKSON, KENTUCKY

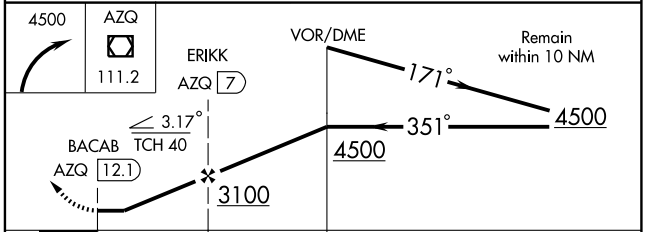
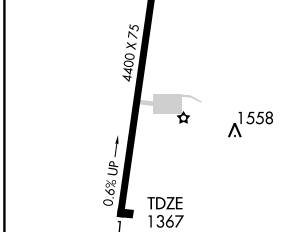
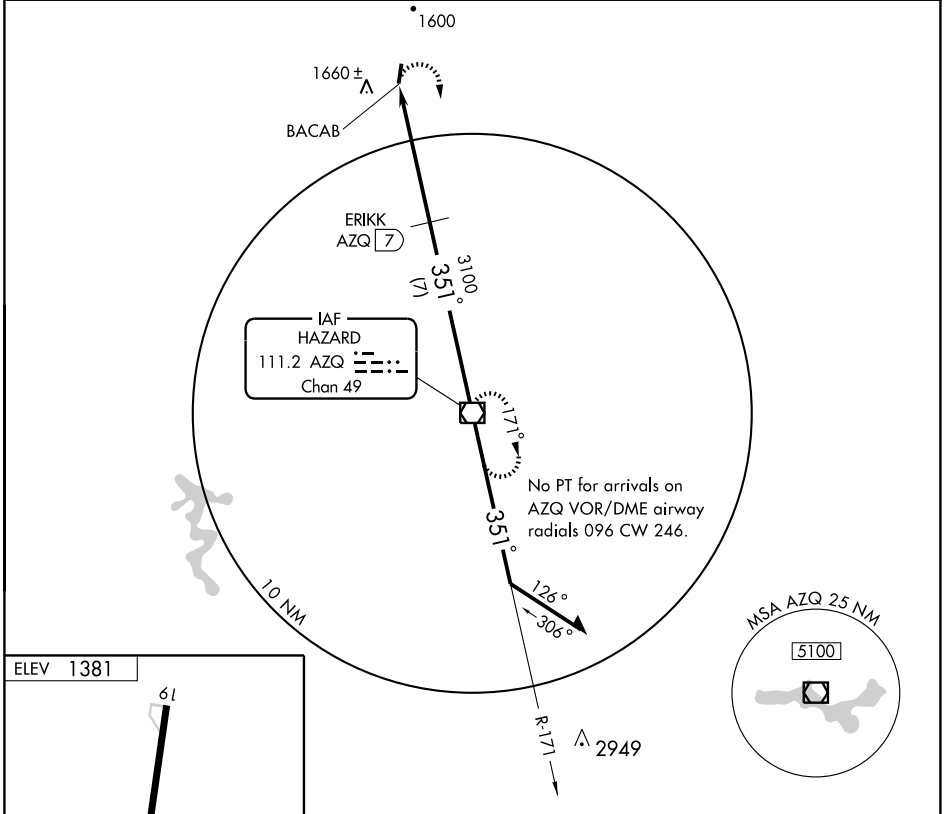
AL-6896 (FAA)

VOR/DME AZQ <b>111.2</b> Chan <b>49</b>	APP CRS <b>351°</b>	Rwy ldg <b>4400</b> TDZE <b>1367</b> Apt Elev <b>1381</b>
---	------------------------	---

**VOR/DME RWY 1**  
JACKSON/JULIAN CARROLL (JKL)

<p>▼ ▲ NA</p>	<p>MISSED APPROACH: Climbing right turn to 4500 direct AZQ VOR/DME and hold.</p>
-------------------	--

ASOS <b>118.375</b>	INDIANAPOLIS CENTER <b>126.57 253.5</b>	UNICOM <b>122.8 (CTAF) 0</b>
------------------------	--	---------------------------------



CATEGORY	A	B	C	D
S-1	1960-1	593 (600-1)	1960-1½ 593 (600-1½)	1960-1¾ 593 (600-1¾)
CIRCLING	2020-1	639 (700-1)	2020-1¾ 639 (700-1¾)	2020-2 639 (700-2)

JACKSON, KENTUCKY  
Amdt 2 07354

37°36'N-83°19'W

JACKSON/JULIAN CARROLL (JKL)  
**VOR/DME RWY 1**

SE-1, 22 OCT 2009 to 19 NOV 2009

SE-1, 22 OCT 2009 to 19 NOV 2009