

BURLINGTON, COLORADO

AL-6895 (FAA)

RNAV (GPS) RWY 15

BURLINGTON/ KIT CARSON COUNTY (ITR)

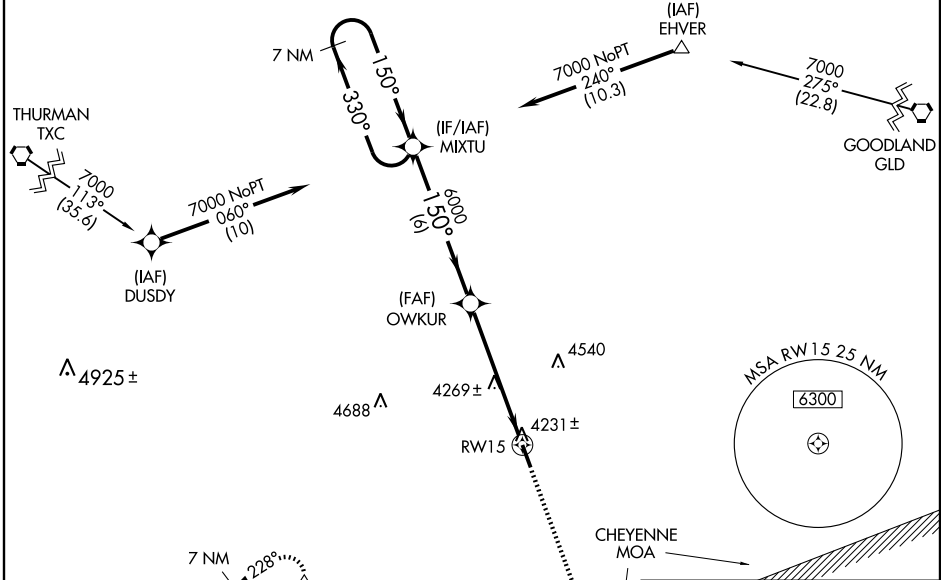
WAAS CH 72999 W15A	APP CRS 150°	Rwy Idg 5201 TDZE 4219 Apt Elev 4219
--	------------------------	---

DME/DME RNP-0.3 NA.
Baro-VNAV NA below -23°C (-9°F)

MISSED APPROACH: Climb to 7000 direct COXIM and right turn via 267° track to YAKIY, and hold, continue climb-in-hold to 7000.

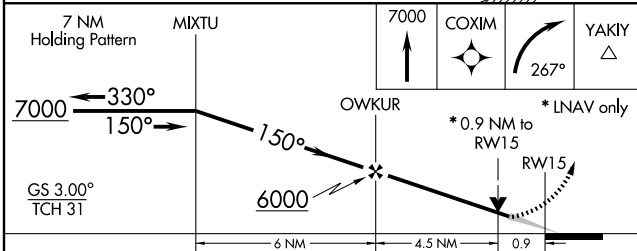
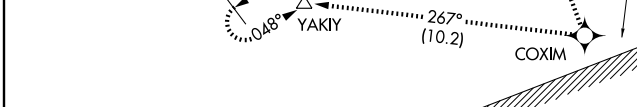
ASOS 135.225	DENVER CENTER 132.5 379.15	UNICOM 122.8 (CTAF) 0
------------------------	--------------------------------------	---------------------------------

Procedure NA for arrival at TXC VORTAC via V148 southwest bound;
For arrival at GLD VORTAC via V108 northeast bound and V132 southeast bound.

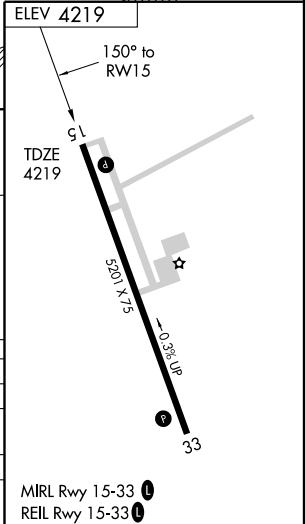


SW-1, 22 OCT 2009 to 19 NOV 2009

SW-1, 22 OCT 2009 to 19 NOV 2009



CATEGORY	A	B	C	D
LPV DA		4469-1	250 (300-1)	
LNVA/ DA VNAV		4481-1	262 (300-1)	
LNVA MDA		4520-1	301 (400-1)	
CIRCLING	4580-1 361 (400-1)	4680-1 461 (500-1)	4680-1½ 461 (500-1½)	4780-2 561 (600-2)



BURLINGTON, COLORADO
Orig 08213

39°15'N-102°17'W

RNAV (GPS) RWY 15

MIRL Rwy 15-33 0
REIL Rwy 15-33 0