

BURLINGTON, COLORADO

AL-6895 (FAA)

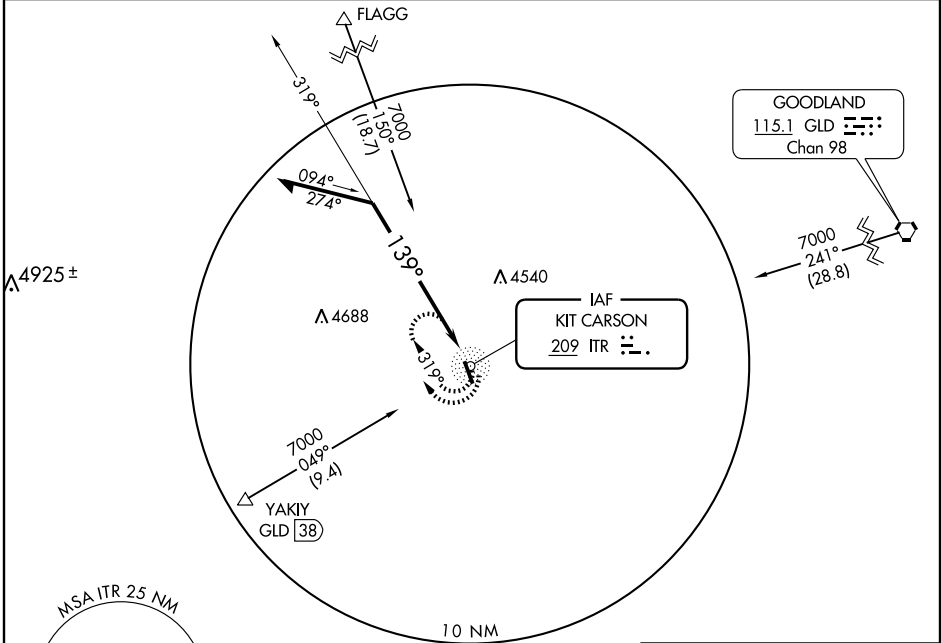
NDB RWY 15

BURLINGTON/KIT CARSON COUNTY (ITR)

NDB ITR 209	APP CRS 139°	Rwy Idg TDZE Apt Elev	5201 4217 4217
-----------------------	------------------------	-----------------------------	-------------------------------------------

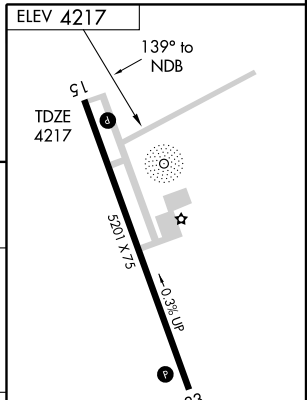
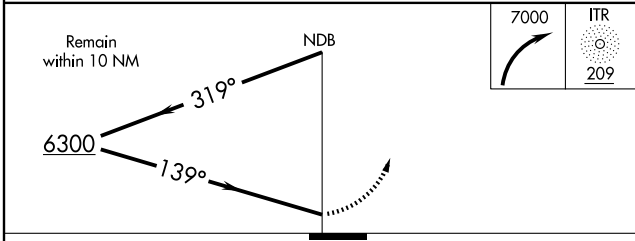
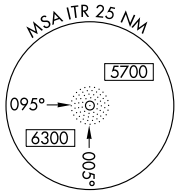
▲ NA	MISSED APPROACH: Climbing right turn to 7000 in ITR NDB holding pattern.
------	--------------------------------------------------------------------------

ASOS 135.225	DENVER CENTER 132.5 379.15	UNICOM 122.8 (CTAF) 1
------------------------	--------------------------------------	---------------------------------



SW-1, 22 OCT 2009 to 19 NOV 2009

SW-1, 22 OCT 2009 to 19 NOV 2009



CATEGORY	A	B	C	D
S-15	4820-1 603 (700-1)		4820-1¾ 603 (700-1¾)	4820-2 603 (700-2)
CIRCLING	4820-1 603 (700-1)		4820-1¾ 603 (700-1¾)	4820-2 603 (700-2)

MIRL Rwy 15-33 1					
REIL Rwy 15-33 1					
Knots	60	90	120	150	180
Min:Sec					

BURLINGTON, COLORADO
Amdt 1 08213

39°15'N-102°17'W

BURLINGTON/KIT CARSON COUNTY (ITR)
NDB RWY 15