

# RNAV (GPS) RWY 23

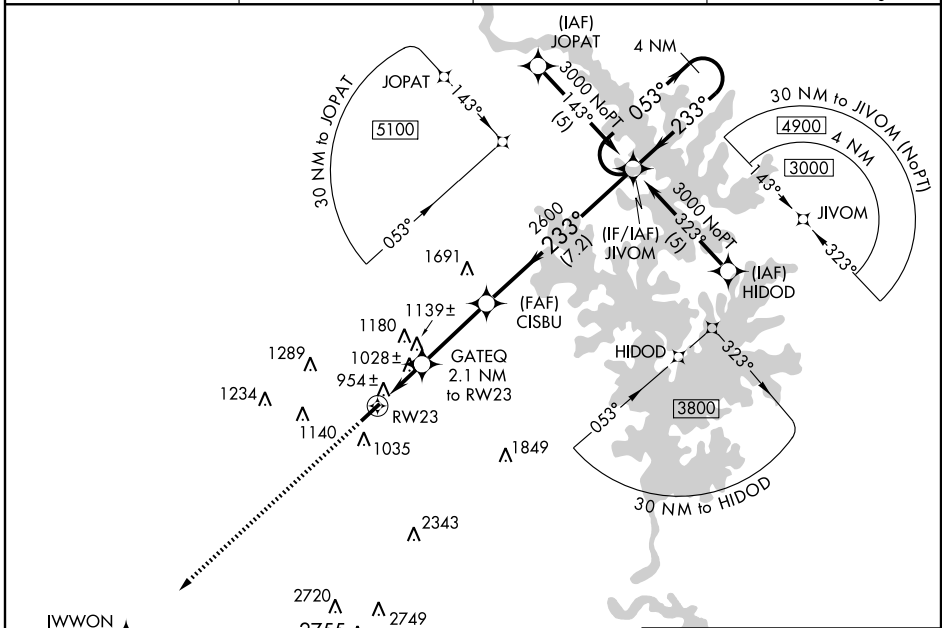
LINCOLNTON-LINCOLN COUNTY RGNL (IPJ)

WAAS CH <b>69210</b> <b>W23A</b>	APP CRS <b>233°</b>	Rwy Idg TDZE Apt Elev	<b>5290</b> <b>872</b> <b>877</b>
--	------------------------	-----------------------------	---

For uncompensated Baro-VNAV systems, LNAV/VNAV NA below -16°C (4°F) or above 47°C (116°F). DME/DME RNP-0.3 NA. Visibility reduction by helicopters NA. VDP and Baro-VNAV NA when using Charlotte altimeter setting. When local altimeter setting not received, use Charlotte altimeter setting and increase all DA 63 feet, increase LNAV/VNAV all Cats and LNAV Cat D visibility ¼ mile, increase Circling visibility Cat D ½ mile.

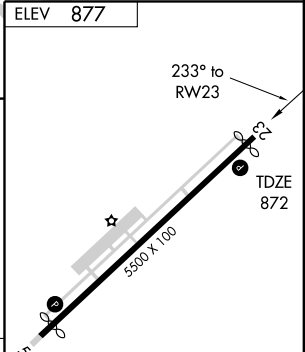
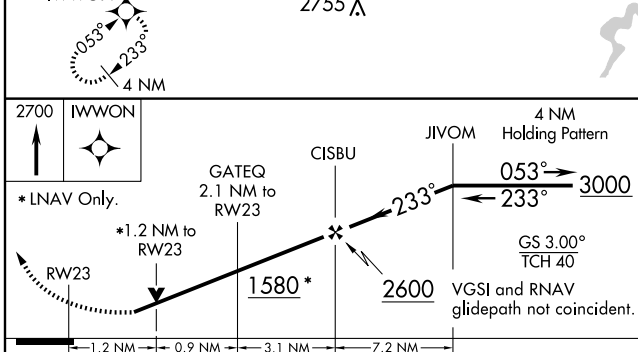
**MISSED APPROACH:**  
Climb to 2700 direct IWWON and hold.

AWOS-3 <b>119.675</b>	CHARLOTTE APP CON <b>134.75 257.2</b>	CLNC DEL (GCO) <b>124.9</b>	UNICOM <b>123.05 (CTAF) 0</b>
--------------------------	--	--------------------------------	----------------------------------



SE-2, 22 OCT 2009 to 19 NOV 2009

SE-2, 22 OCT 2009 to 19 NOV 2009



CATEGORY	A	B	C	D
LPV DA		1187-1¼	315 (400-1¼)	
LNAV/VNAV DA		1224-1¼	352 (400-1¼)	
LNAV MDA	1280-1	408 (500-1)	1280-1¼	408 (500-1¼)
CIRCLING	1340-1	463 (500-1)	1340-1½	1540-2
			463 (500-1½)	663 (700-2)

REIL Rwy 5 and 23 0  
MIRL Rwy 5-23 0