

NDB or GPS RWY 23

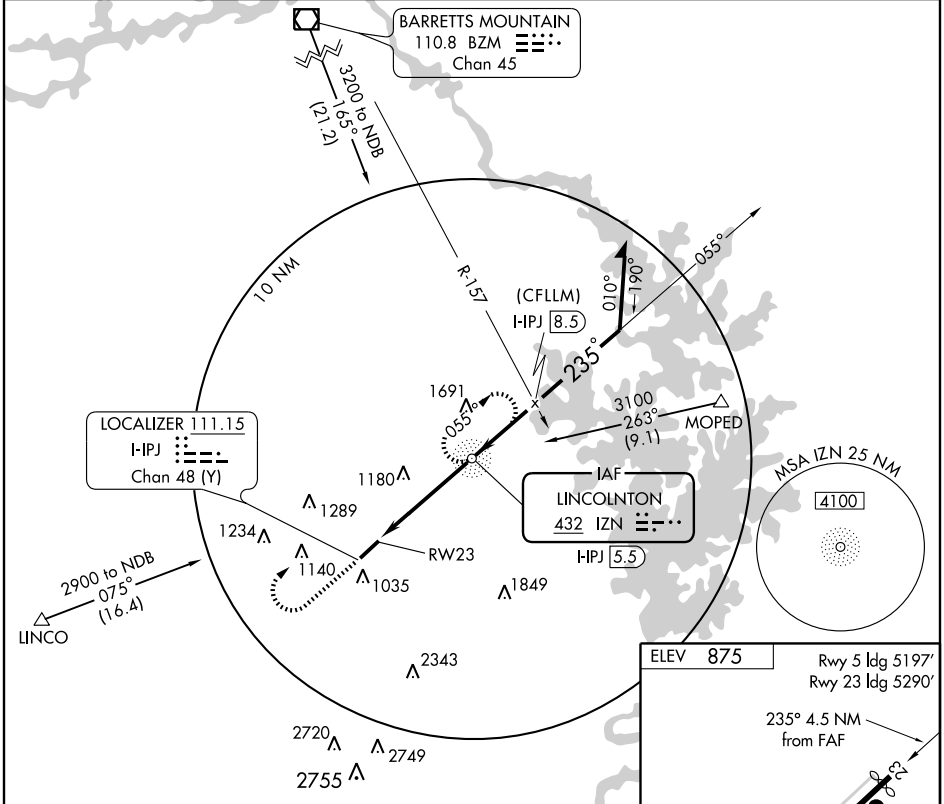
LINCOLNTON-LINCOLN COUNTY RGNL (IPJ)

NDB IZN 432	APP CRS 235°	Rwy ldg TDZE Apt Elev	5290 873 875
-----------------------	------------------------	-----------------------------	---

▽ If local altimeter setting not received, use Charlotte altimeter setting and increase all MDAs 80 feet.

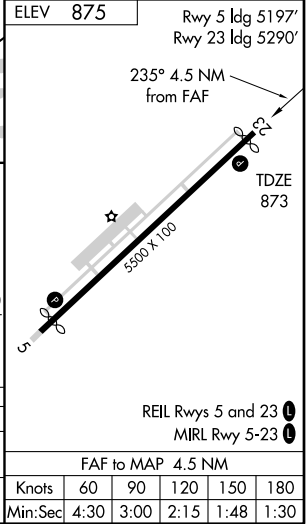
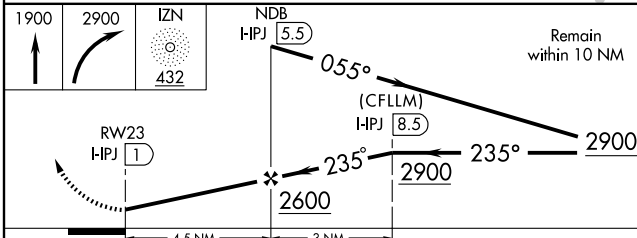
MISSED APPROACH: Climb to 1900, then climbing right turn to 2900 direct IZN NDB and hold.

AWOS-3 119.675	CHARLOTTE APP CON 134.75 257.2	CLNC DEL (GCO) 124.9	UNICOM 123.05 (CTAF) 0
--------------------------	--	--------------------------------	---



SE-2, 22 OCT 2009 to 19 NOV 2009

SE-2, 22 OCT 2009 to 19 NOV 2009



CATEGORY	A	B	C	D
S-23	1480-1	607 (700-1)	1480-1 ³ / ₄ 607 (700-1 ³ / ₄)	1480-2 607 (700-2)
CIRCLING	1480-1	605 (700-1)	1480-1 ³ / ₄ 605 (700-1 ³ / ₄)	1540-2 665 (700-2)

FAF to MAP 4.5 NM					
Knots	60	90	120	150	180
Min:Sec	4:30	3:00	2:15	1:48	1:30

NDB or GPS RWY 23