

GRINNELL, IOWA

AL-6893 (FAA)

VOR/DME TNU 112.5 Chan 72	APP CRS 282°	Rwy Idg TDZE 1008 Apt Elev 1008	5000
---	------------------------	---	-------------

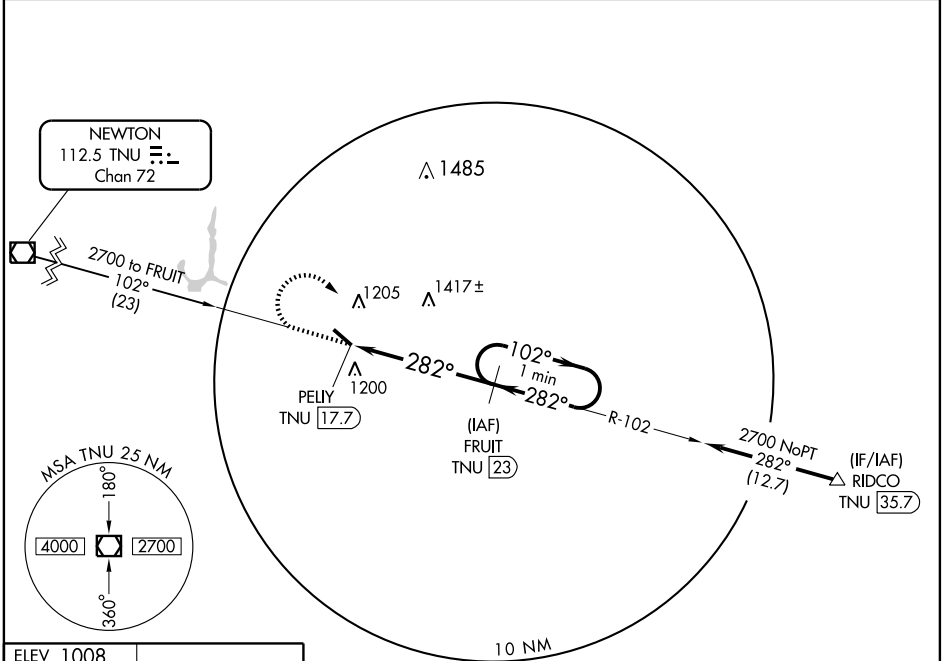
VOR/DME RWY 31

GRINNELL RGNL (GGI)

⚠ When local altimeter setting not received, use Newton altimeter setting and increase all MDAs 40 feet.
⚠ Visibility reduction by helicopters NA.

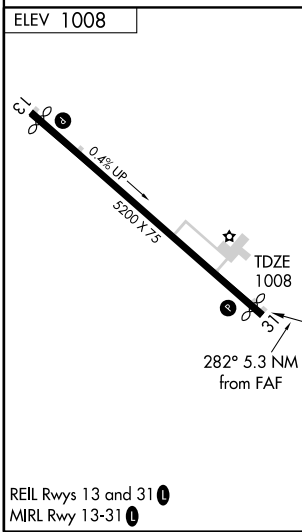
MISSED APPROACH: Climb to 2700 then right turn via TNU VOR/DME R-102 to FRUIT/TNU 23 DME and hold.

AWOS-3 120.725	CHICAGO CENTER 127.05 319.8	UNICOM 122.8 (CTAF) 📻
--------------------------	---------------------------------------	--

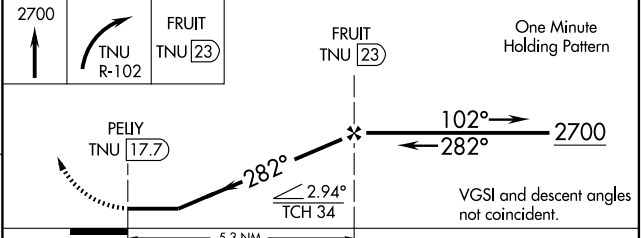


NC-3, 22 OCT 2009 to 19 NOV 2009

NC-3, 22 OCT 2009 to 19 NOV 2009



Procedure NA for arrivals at RIDCO via V294 northeast bound.



CATEGORY	A	B	C	D
S-31	1680-1 672 (700-1)		1680-2 672 (700-2)	NA
CIRCLING	1680-1 672 (700-1)		1680-2 672 (700-2)	NA

GRINNELL, IOWA
Amdt 4 09071

41°43'N-92°44'W

GRINNELL RGNL (GGI) VOR/DME RWY 31