

GRINNELL, IOWA

AL-6893 (FAA)

RNAV (GPS) RWY 31

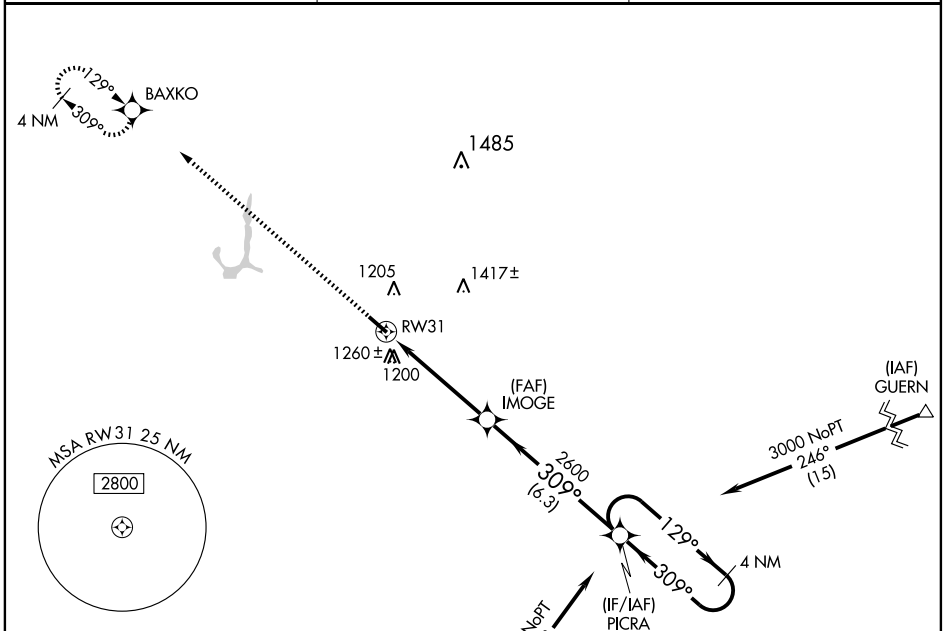
GRINNELL RGNL (GGI)

APP CRS 309°	Rwy ldg 5000 TDZE 1008 Apt Elev 1008
------------------------	---

⚠ When local altimeter setting not received, use Newton altimeter setting and increase all MDAs 40 feet.
⚠ Visibility reduction by helicopters NA.
 DME/DME RNP-0.3 NA.

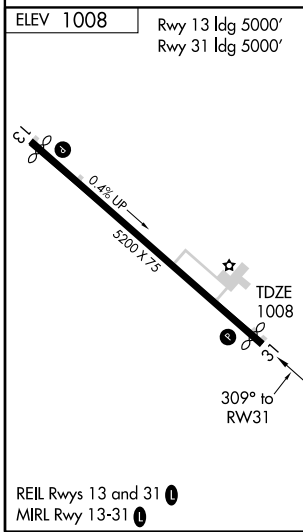
MISSED APPROACH: Climb to 3000 direct BAXKO and hold.

AWOS-3 120.725	CHICAGO CENTER 127.05 319.8	UNICOM 122.8 (CTAF) 0
--------------------------	---------------------------------------	---------------------------------



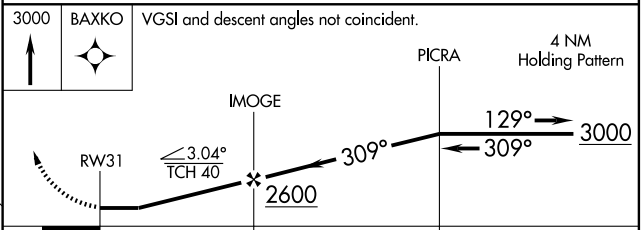
NC-3, 22 OCT 2009 to 19 NOV 2009

NC-3, 22 OCT 2009 to 19 NOV 2009



REIL Rws 13 and 31 0
 MIRL Rwy 13-31 0

Procedure NA for arrivals at NASAL via V6-8 westbound.



CATEGORY	A	B	C	D
LNAV MDA	1560-1	552 (600-1)	1560-1½ 552 (600-1½)	NA
CIRCLING	1620-1	612 (700-1)	1620-1¾ 612 (700-1¾)	NA

GRINNELL, IOWA
 Amdt 1 08157

41°43'N-92°44'W

GRINNELL RGNL (GGI) RNAV (GPS) RWY 31