

BONIFAY, FLORIDA

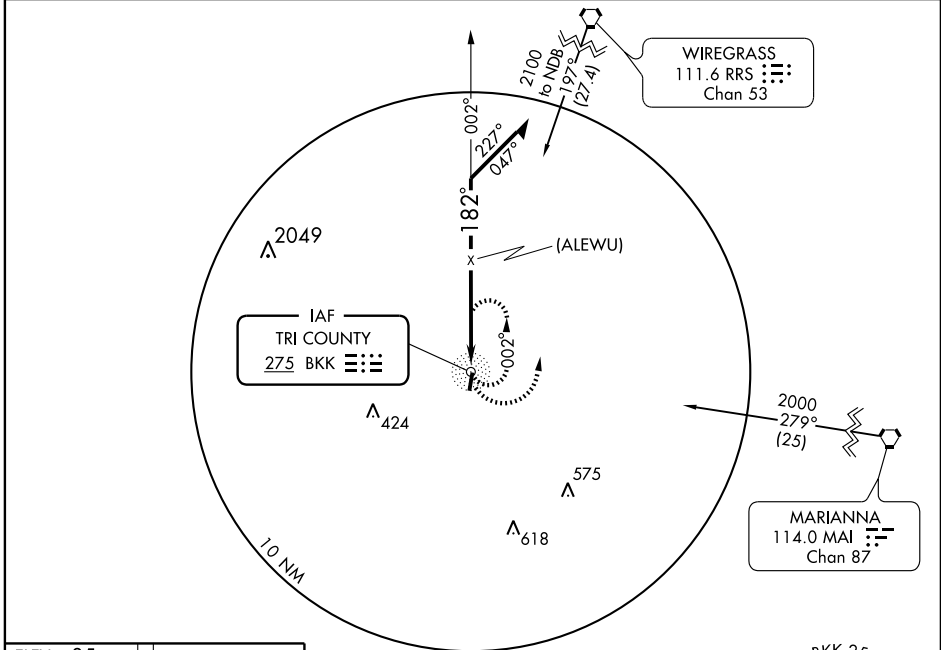
AL-6892 (FAA)

# NDB or GPS-A BONIFAY/TRI COUNTY (1J0)

NDB BKK <b>275</b>	APP CRS <b>182°</b>	Rwy Idg TDZE Apt Elev	<b>N/A</b> <b>N/A</b> <b>85</b>
-----------------------	------------------------	-----------------------------	---------------------------------------

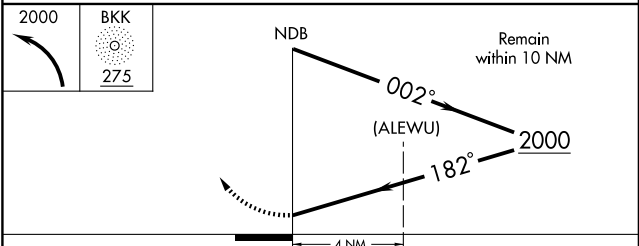
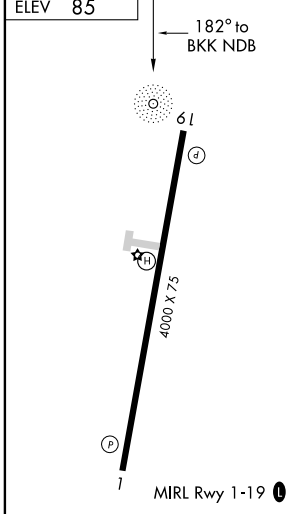
**▼** Use Cairns AAF (Fort Rucker) altimeter setting.  
**▲ NA** MISSED APPROACH: Climbing left turn to 2000 in BKK NDB holding pattern.

CAIRNS APP CON ★ **133.75 270.35** UNICOM **122.8 (CTAF)**



SE-3, 22 OCT 2009 to 19 NOV 2009

SE-3, 22 OCT 2009 to 19 NOV 2009



CATEGORY	A	B	C	D
CIRCLING	820-1	735 (800-1)	820-2 735 (800-2)	NA

BONIFAY, FLORIDA  
Amdt 1 05132

30°51'N-85°36'W

# BONIFAY/TRI COUNTY (1J0) NDB or GPS-A