

# VOR/DME RWY 5

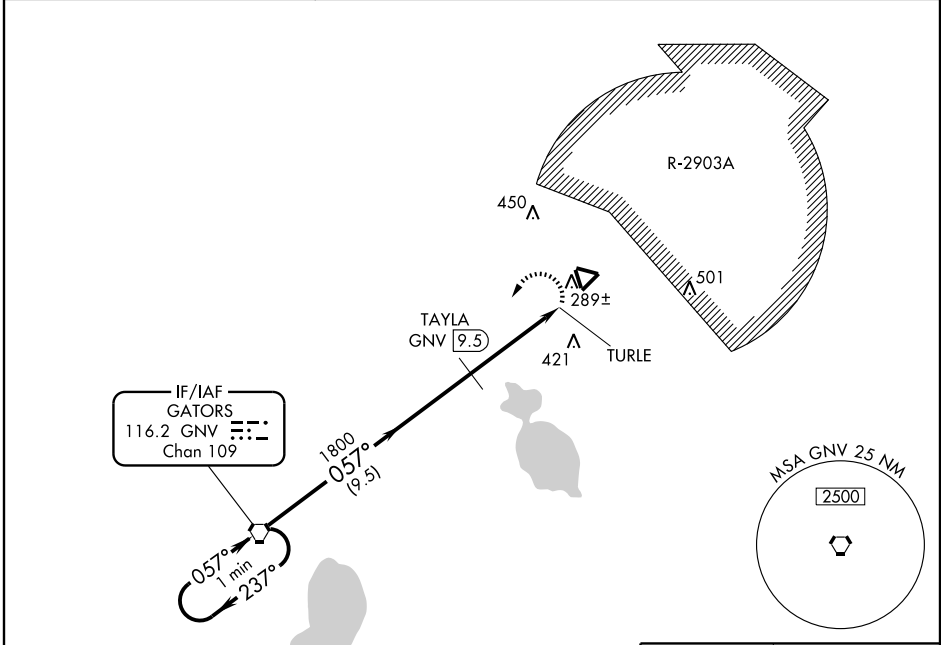
KEYSTONE AIRPARK (42J)

VORTAC GNV <b>116.2</b> Chan <b>109</b>	APP CRS <b>057°</b>	Rwy Idg <b>5044</b> TDZE <b>190</b> Apt Elev <b>196</b>
---	------------------------	---

▼ Visibility reduction by helicopters NA. Circling NA for Cats. B and C NE of Rwy 11-29. When local altimeter setting not received use Gainesville altimeter setting and increase all MDA 60 feet; increase S-5 Cat. C visibility ¼ mile.  
 ▲ NA

MISSED APPROACH: Climbing left turn to 3000 direct GNV VORTAC and hold.

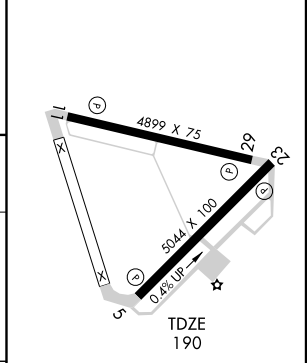
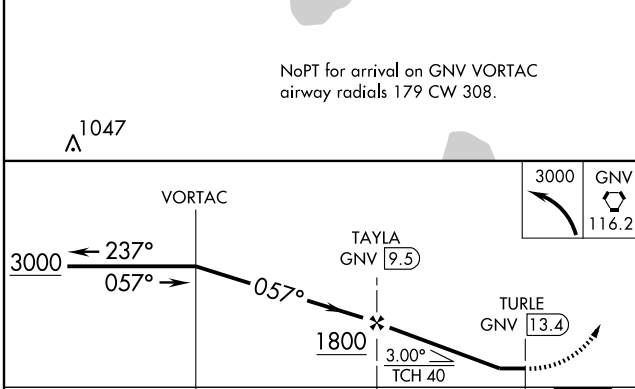
AWOS-3 <b>124.275</b>	JACKSONVILLE APP CON <b>118.175 338.25</b>	UNICOM <b>122.7 (CTAF)</b> <b>0</b>
--------------------------	---	--



IF/IAF  
GATORS  
116.2 GNV  
Chan 109

NoPT for arrival on GNV VORTAC airway radials 179 CW 308.

ELEV 196



CATEGORY	A	B	C	D
S-5	680-1¼	490 (500-1¼)		NA
CIRCLING	680-1¼	484 (500-1¼)	680-1½ 484 (500-1½)	NA

REIL Rwy 11  
MIRL Rwy 5-23 **0**  
HIRL Rwy 11-29 **0**

SE-3, 22 OCT 2009 to 19 NOV 2009

SE-3, 22 OCT 2009 to 19 NOV 2009