

RNAV (GPS) RWY 5

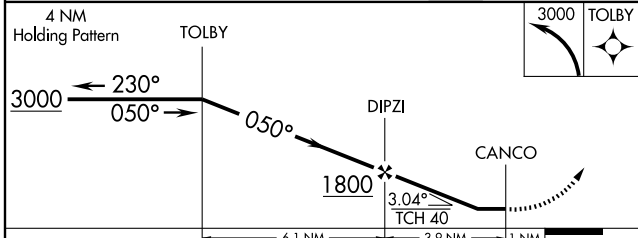
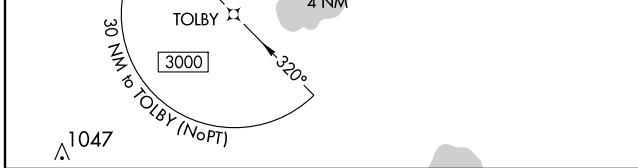
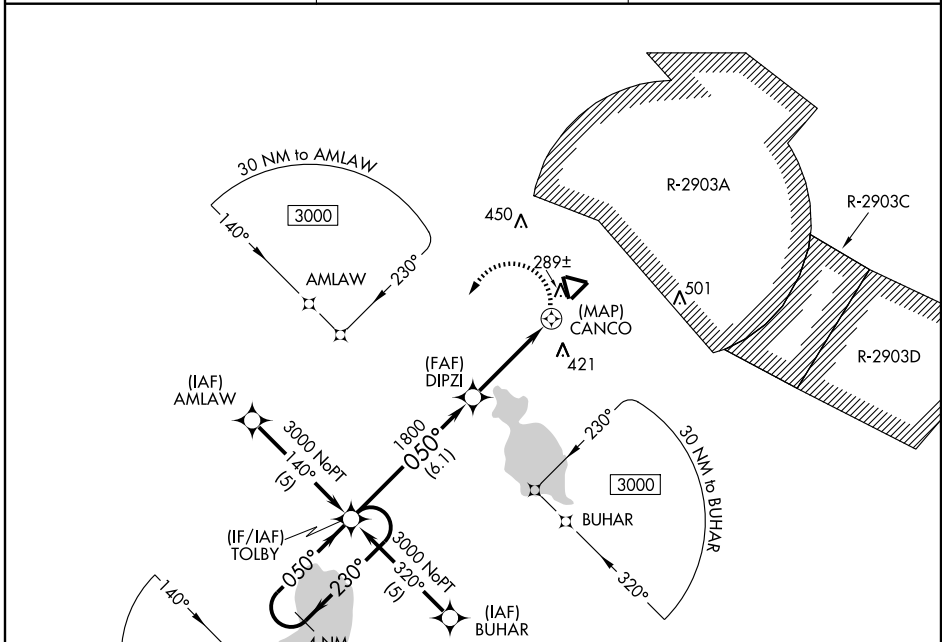
KEYSTONE AIRPARK (42J)

APP CRS	Rwy Idg	5044
050°	TDZE	190
	Apt Elev	196

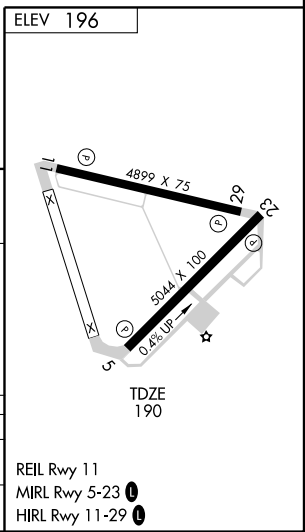
▽ DME/DME RNP-0.3 NA. Visibility reduction by helicopters NA. Circling NA for Cats. B and C NE of Rwy 11-29. When local altimeter setting not received, use Gainesville altimeter setting and increase all MDA 60 feet.

MISSED APPROACH:
Climbing left turn to 3000 direct TOLBY and hold.

AWOS-3 124.275	JACKSONVILLE APP CON 118.175 338.25	UNICOM 122.7 (CTAF) 0
--------------------------	---	---------------------------------



CATEGORY	A	B	C	D
LNVA MDA	600-1¼ 410 (500-1¼)			NA
CIRCLING	620-1¼ 424 (500-1¼)	660-1¼ 464 (500-1¼)	660-1½ 464 (500-1½)	NA



SE-3, 22 OCT 2009 to 19 NOV 2009

SE-3, 22 OCT 2009 to 19 NOV 2009