

BRADY, TEXAS

AL-6890 (FAA)

RNAV (GPS) RWY 17

BRADY/CURTIS FIELD (BBD)

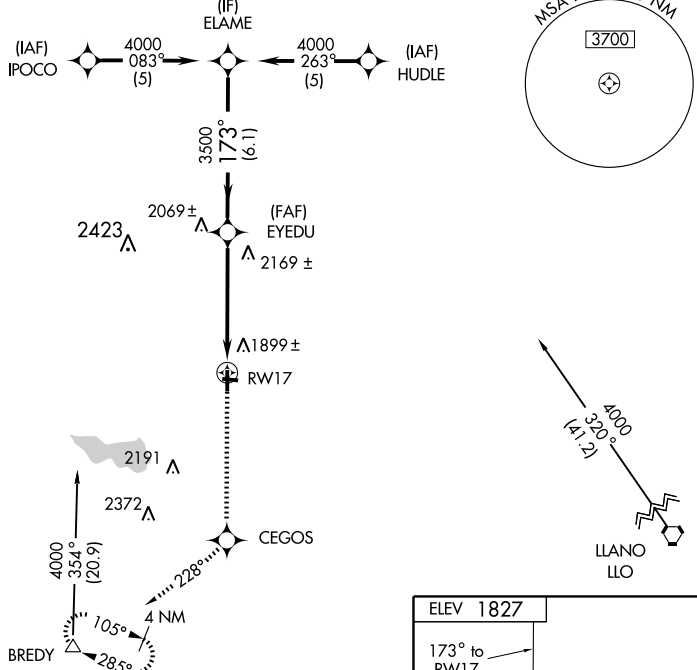
WAAS CH 53608 W17A	APP CRS 173°	Rwy Idg 4605
		TDZE 1827
		Apt Elev 1827

⚠ Circling to Rwy 35 NA at night. DME/DME RNP-0.3 NA. For uncompensated Baro-VNAV systems, LNAV/VNAV NA below -18°C (0°F) or above 54°C (130°F).
⚠ When local altimeter setting not received, use Junction altimeter setting and increase all DA/MDA 120 feet, increase LPV all Cats visibility ¼ mile, LNAV and circling Cat C visibility ½ mile. VDP and Baro-VNAV NA when using Junction altimeter setting.

MISSED APPROACH: Climb to 4000 direct CEGOS and via 228° track to BREDY and hold.

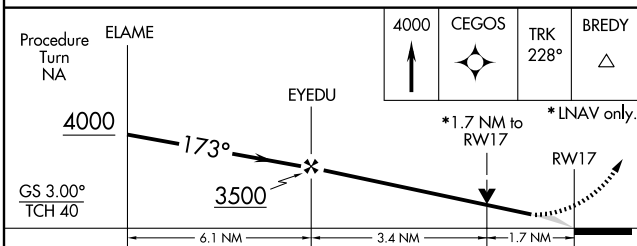
AWOS-3 118.375	HOUSTON CENTER 132.35 317.5	UNICOM 122.8 (CTAF) 0
--------------------------	---------------------------------------	---------------------------------

Procedure NA for arrivals at LLO Vortac via V161-568 southbound.

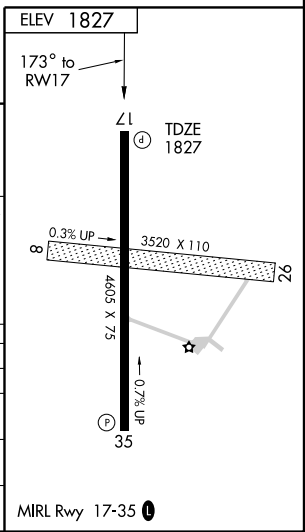


SC-3, 22 OCT 2009 to 19 NOV 2009

SC-3, 22 OCT 2009 to 19 NOV 2009



CATEGORY	A	B	C	D
LPV DA	2077-1	250 (300-1)		NA
LNAV/VNAV DA	2191-1¼	364 (400-1¼)		NA
LNAV MDA	2420-1	593 (600-1)	2420-1½ 593 (600-1½)	NA
CIRCLING	2420-1	593 (600-1)	2420-1½ 593 (600-1½)	NA



BRADY, TEXAS
Amdt 1 09183

31°11' N-99°19' W

RNAV (GPS) RWY 17