

BRADY, TEXAS

AL-6890 (FAA)

NDB BBD <b>380</b>	APP CRS <b>167°</b>	Rwy Idg TDZE Apt Elev <b>4605</b> <b>1827</b> <b>1827</b>
-----------------------	------------------------	--------------------------------------------------------------------------

# NDB RWY 17

BRADY/CURTIS FIELD (BBD)

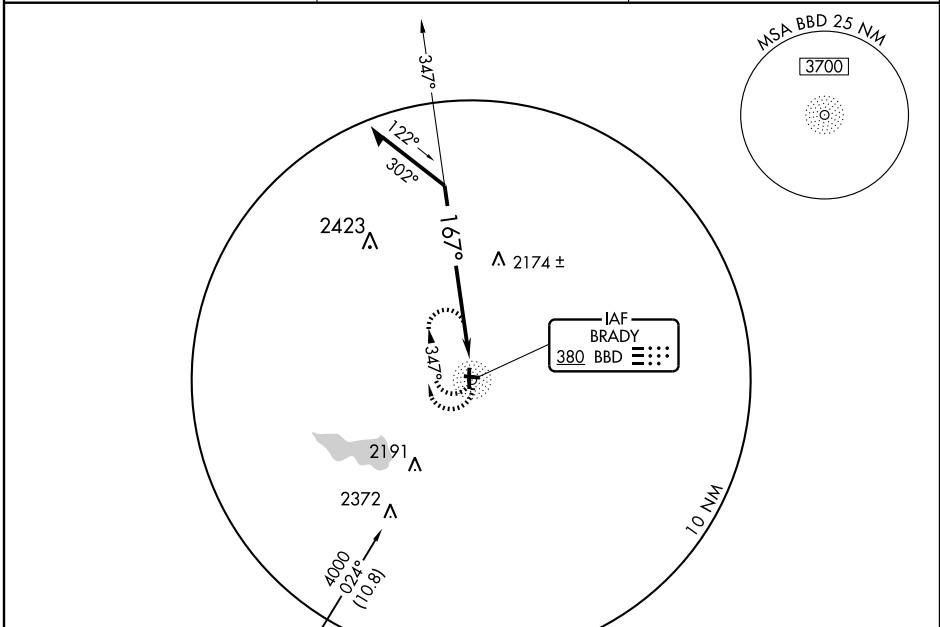
**▽** Circling to Rwy 35 NA at night. Visibility reduction by helicopters NA.  
**△** NA When local altimeter setting not received, use Junction altimeter setting and increase all MDAs 120 feet and increase S-17 and circling Cat B visibility ¼ mile and Cat C visibility ½ mile.

**MISSED APPROACH:** Climbing right turn to 4000 in BBD NDB holding pattern.

AWOS-3  
**118.375**

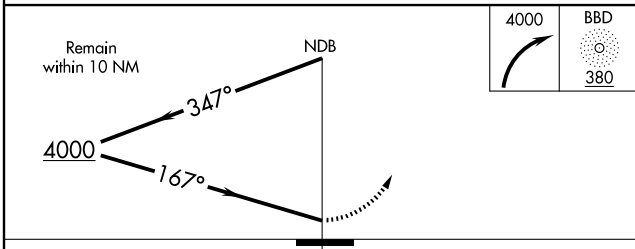
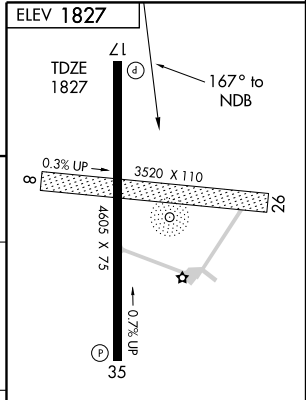
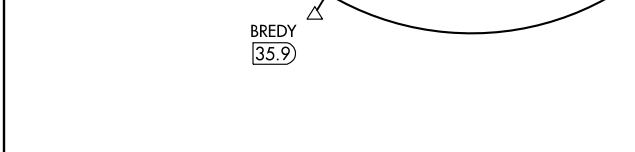
HOUSTON CENTER  
**132.35 317.5**

UNICOM  
**122.8 (CTAF)**



SC-3, 22 OCT 2009 to 19 NOV 2009

SC-3, 22 OCT 2009 to 19 NOV 2009



CATEGORY	A	B	C	D
S-17	2540-1	713 (800-1)	2540-2 713 (800-1)	NA
CIRCLING	2540-1	713 (800-1)	2540-2 713 (800-1)	NA

BRADY, TEXAS  
Amdt 4 09183

31°11' N-99°19' W

# BRADY/CURTIS FIELD (BBD)

## NDB RWY 17

MIRL Rwy 17-35