

SIREN, WISCONSIN

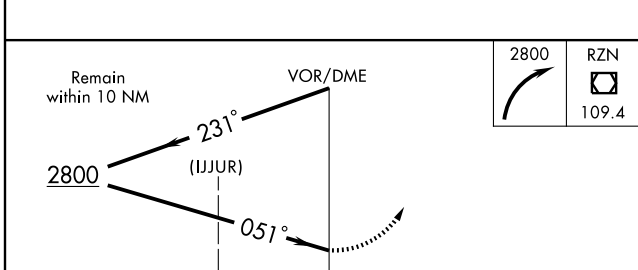
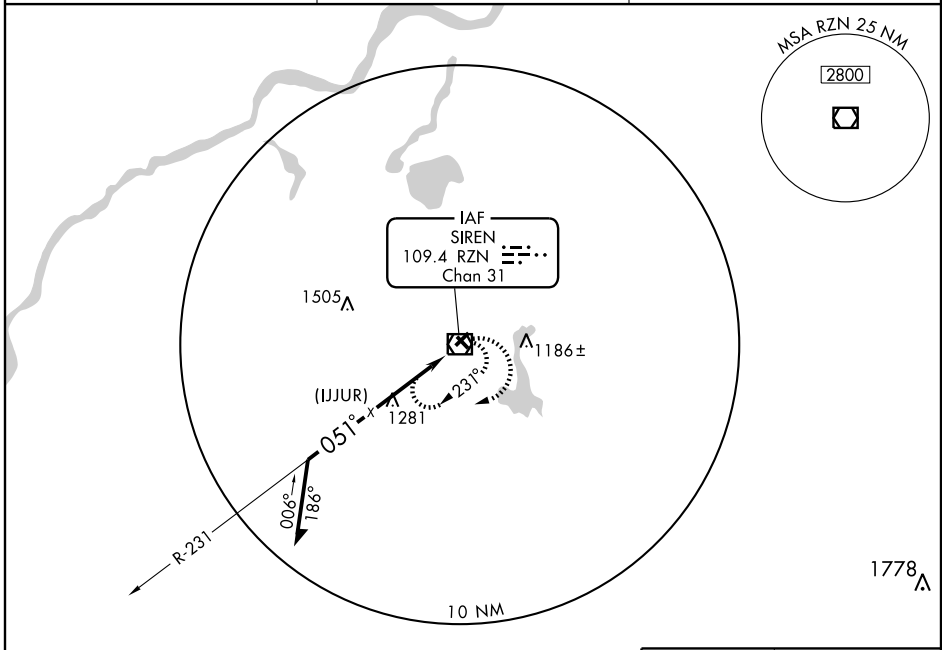
AL-6889 (FAA)

VOR or GPS RWY 4  
SIREN/BURNETT COUNTY (RZN)

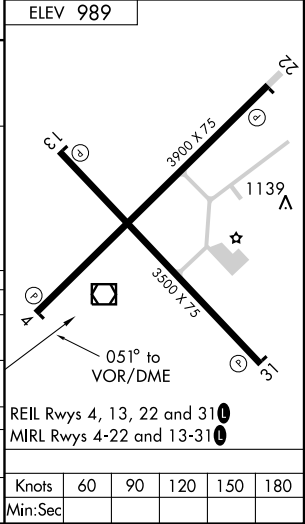
VOR/DME RZN <b>109.4</b> Chan <b>31</b>	APP CRS <b>051°</b>	Rwy Idg <b>3900</b> TDZE <b>989</b> Apt Elev <b>989</b>
-----------------------------------------------	------------------------	---------------------------------------------------------------

**NA** Obtain a local altimeter setting on CTAF; when not received, use Cambridge, MN altimeter setting. MISSED APPROACH: Climbing right turn to 2800 in RZN VOR/DME holding pattern.

AWOS-3 <b>118.325</b>	MINNEAPOLIS CENTER <b>121.05 397.9</b>	UNICOM <b>122.8 (CTAF)</b>
--------------------------	-------------------------------------------	-------------------------------



CATEGORY	A		B		C		D	
	S-4	1620-1	631 (700-1)	1620-1¾	631 (700-1¾)	1620-2	631 (700-2)	631 (700-2)
CIRCLING	1620-1	631 (700-1)	1620-1¾	631 (700-1¾)	1620-2	631 (700-2)	631 (700-2)	
CAMBRIDGE, MN ALTIMETER SETTING MINIMUMS								
S-4	1720-1	731 (800-1)	1720-2	731 (800-2)	1720-2¼	731 (800-2¼)	731 (800-2¼)	
CIRCLING	1720-1	731 (800-1)	1720-2	731 (800-2)	1720-2¼	731 (800-2¼)	731 (800-2¼)	



SIREN, WISCONSIN  
Amdt 2A 06159

45°49'N-92°22'W

SIREN/BURNETT COUNTY (RZN)  
VOR or GPS RWY 4

EC-3, 22 OCT 2009 to 19 NOV 2009

EC-3, 22 OCT 2009 to 19 NOV 2009

REIL Rwy 4, 13, 22 and 31	<b>1</b>				
MIRL Rwy 4-22 and 13-31	<b>1</b>				
Knots	60	90	120	150	180
Min:Sec					