

# RNAV (GPS) RWY 19

SOLON SPRINGS MUNI (OLG)

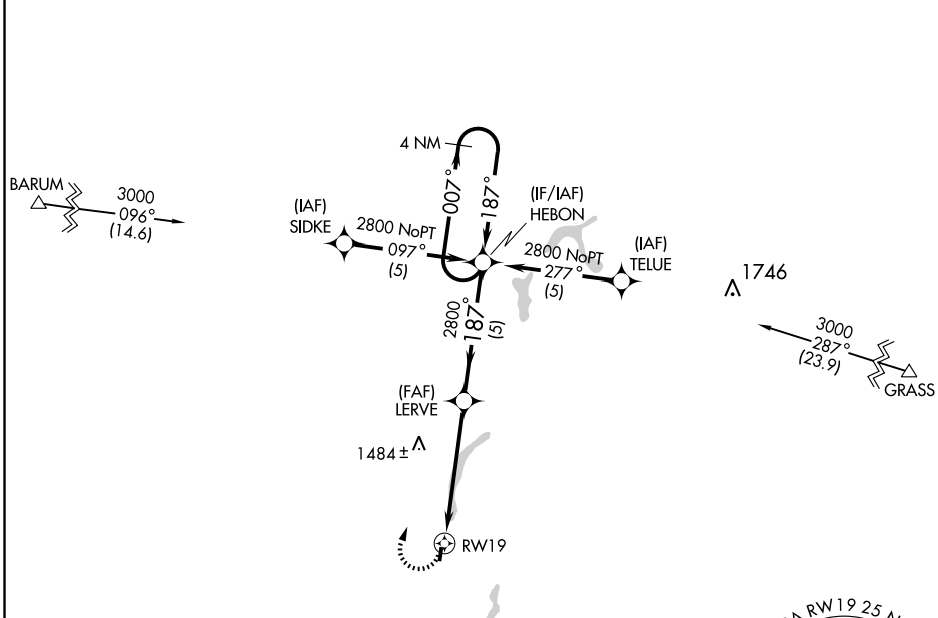
APP CRS	Rwy Idg	<b>3100</b>
<b>187°</b>	TDZE	<b>1102</b>
	Apt Elev	<b>1102</b>

**▲ NA** Use Duluth/Sky Harbor altimeter setting.  
GPS or RNP-0.3 Required.  
DME/DME RNP-0.3 NA

**MISSED APPROACH:** Climbing right turn to 2800 direct HEBON WP and hold.

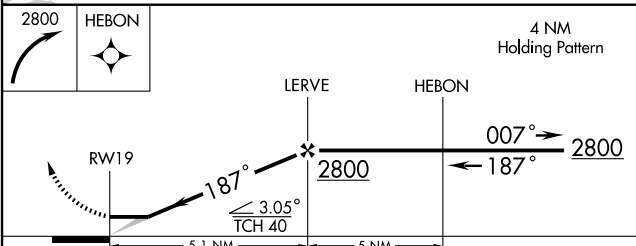
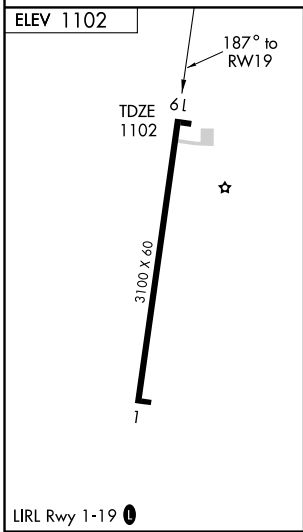
**DULUTH APP CON ★**  
**125.45 255.9**

**UNICOM**  
**122.9 (CTAF) ①**



EC-3, 22 OCT 2009 to 19 NOV 2009

EC-3, 22 OCT 2009 to 19 NOV 2009



CATEGORY	A	B	C	D
LNAV MDA	1800-1	698 (700-1)	1800-2 698 (700-2)	NA
CIRCLING	1800-1	698 (700-1)	1800-2 698 (700-2)	NA