

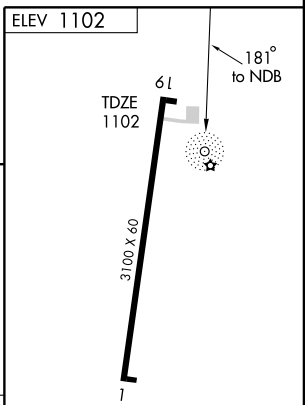
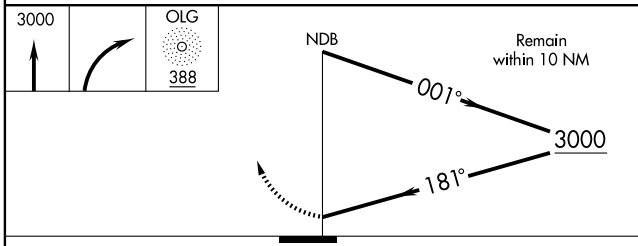
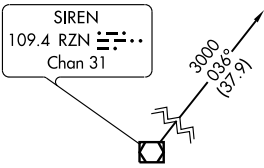
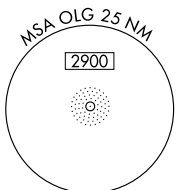
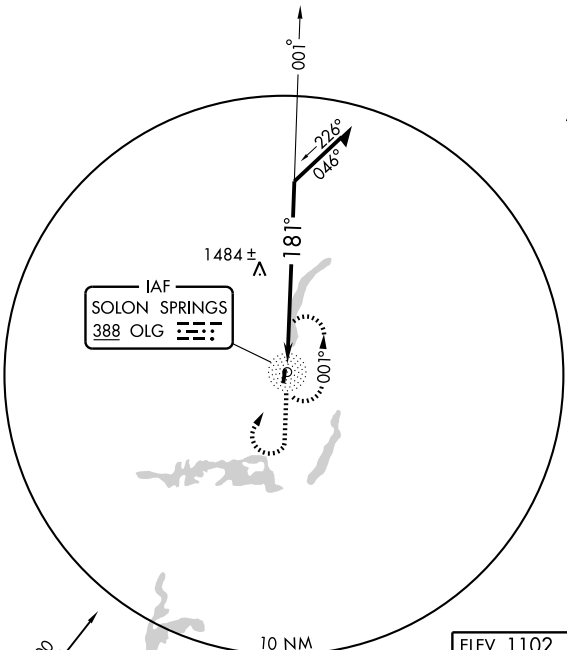
NDB OLG <b>388</b>	APP CRS <b>181°</b>	Rwy Idg TDZE Apt Elev	<b>3100</b> <b>1102</b> <b>1102</b>
-----------------------	------------------------	-----------------------------	---

**NDB RWY 19**  
SOLON SPRINGS MUNI (OLG)

<b>▲</b> NA Use Duluth/Sky Harbor altimeter setting.	MISSED APPROACH: Climb to 3000 then right turn direct OLG NDB and hold.
DULUTH APP CON ★ <b>125.45 255.9</b>	UNICOM <b>122.9 (CTAF) 0</b>

EC-3, 22 OCT 2009 to 19 NOV 2009

EC-3, 22 OCT 2009 to 19 NOV 2009



CATEGORY	A	B	C	D
S-19	2020-1¼ 918 (1000-1¼)		2020-2¾ 918 (1000-2¾)	NA
CIRCLING	2020-1¼ 918 (1000-1¼)		2020-2¾ 918 (1000-2¾)	NA

LIRL Rwy 1-19 0					
Knots	60	90	120	150	180
Min:Sec					