

RNAV (GPS) RWY 11

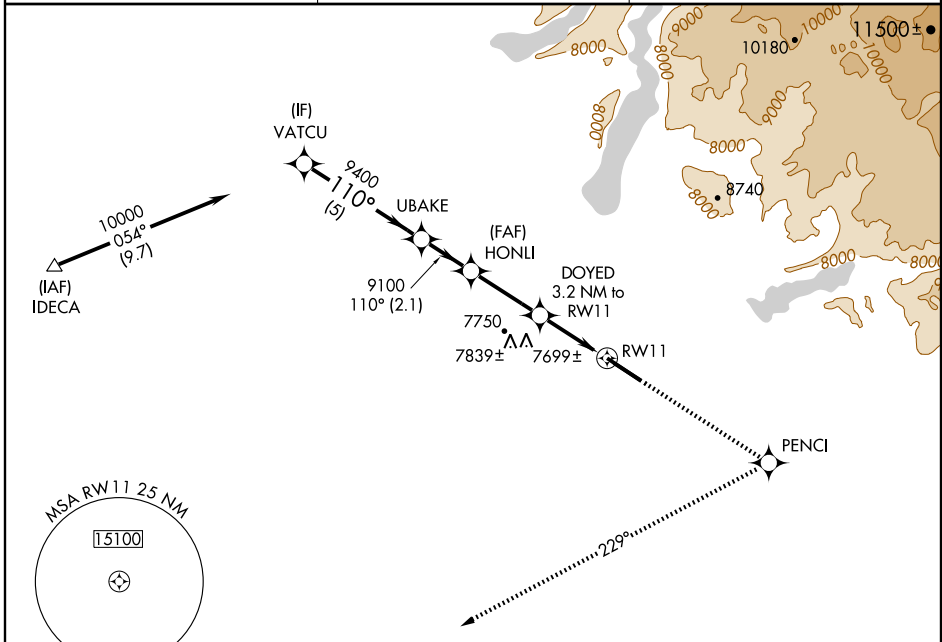
PINEDALE/ RALPH WENZ FIELD (PNA)

| | |
|------------------------|-------------------------|
| APP CRS 110° | Rwy Idg 8900 |
| | TDZE 7086 |
| | Apt Elev 7086 |

▼ DME/DME RNP-0.3 NA.
▲ NA If local altimeter setting not received, use Miley Memorial Field altimeter setting and increase all MDAs 60 feet.
 VDP NA when using Miley Memorial Field altimeter setting.

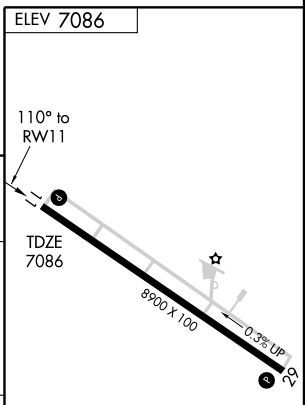
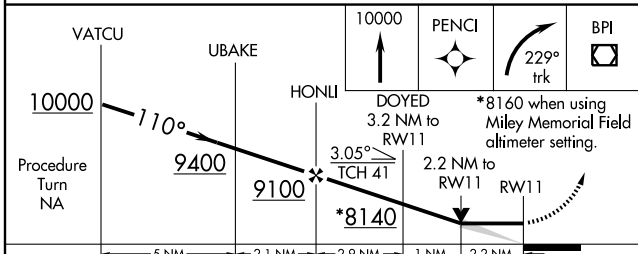
MISSED APPROACH: Climb to 10000 direct PENCHI and right turn via 229° track to BPI VOR/DME and hold.

| | | |
|--------------------------|--|---------------------------------|
| AWOS-3 118.325 | SALT LAKE CENTER 128.35 239.25 | UNICOM 122.8 (CTAF) 0 |
|--------------------------|--|---------------------------------|



NW-1, 22 OCT 2009 to 19 NOV 2009

NW-1, 22 OCT 2009 to 19 NOV 2009



| CATEGORY | A | B | C | D |
|----------|-----------------------|-------------------------|-------------------------|-------------------------|
| LNAV MDA | 7820-1 | 734 (800-1) | 7820-2 734 (800-2) | 7820-2½ 734 (800-2½) |
| CIRCLING | 7820-1 734 (800-1) | 7880-1¼ 794 (800-1¼) | 7900-2½ 814 (900-2½) | 7920-2¾ 834 (900-2¾) |

REIL Rwy 11 and 29 **0**
 MIRL Rwy 11-29 **0**