

WALNUT COVE, NORTH CAROLINA

AL-6882 (FAA)

VORTAC GSO	APP CRS	Rwy Idg	2725
116.2	334°	TDZE	631
Chan 109		Apt Elev	631

# VOR/DME or GPS RWY 34

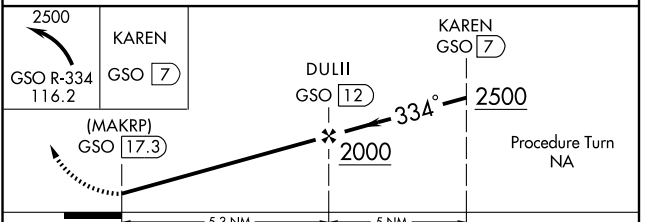
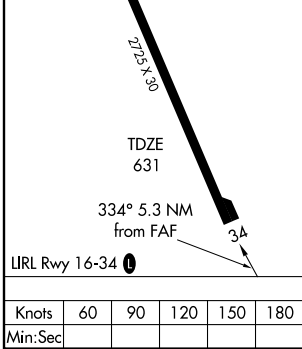
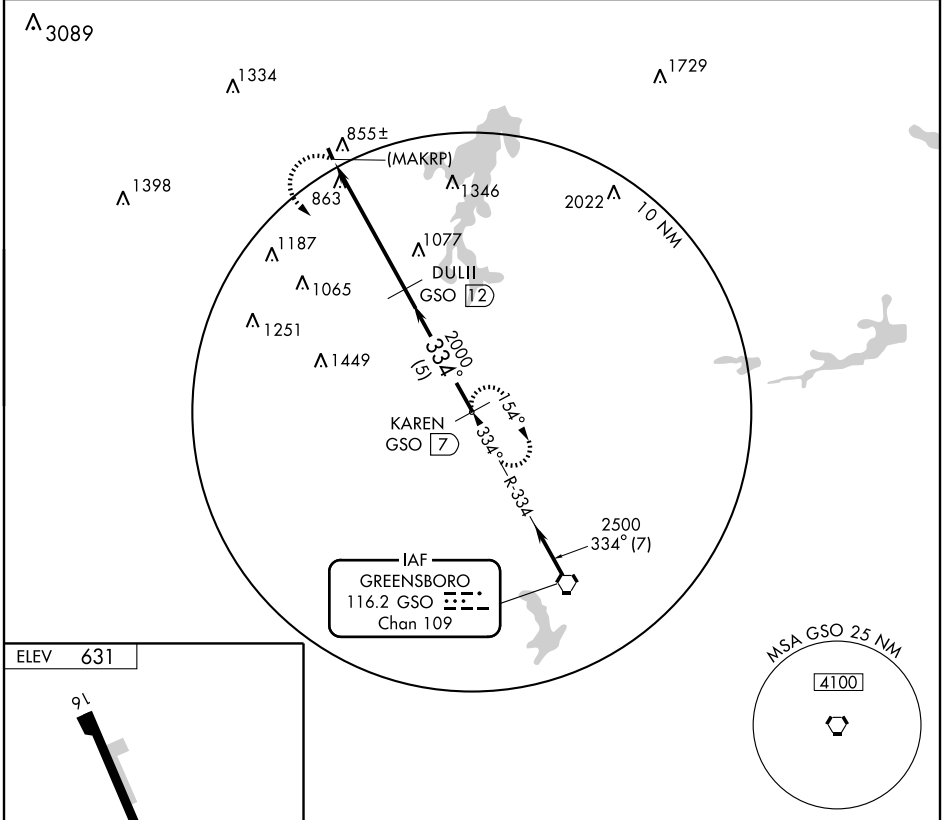
WALNUT COVE/ MEADOW BROOK FIELD (N63)

**▼** Use Smith Reynolds altimeter setting, when not available, use Greensboro altimeter setting and increase all MDAs 20 feet.  
**▲ NA** Procedure NA at night.

**MISSED APPROACH:** Climbing left turn to 2500 via GSO R-334 to KAREN GSO 7 DME and hold.

GREENSBORO APP CON  
**124.35 269.225**

UNICOM  
**123.0 (CTAF) 0**



CATEGORY	A	B	C	D
S-34	1400-1 769 (800-1)	1400-1¼ 769 (800-1¼)		NA
CIRCLING	1400-1 769 (800-1)	1400-1¼ 769 (800-1¼)		NA

WALNUT COVE, NORTH CAROLINA  
 Orig 08101

WALNUT COVE/ MEADOW BROOK FIELD (N63)  
 36°18'N - 80°09'W  
**VOR/DME or GPS RWY 34**

SE-2, 22 OCT 2009 to 19 NOV 2009

SE-2, 22 OCT 2009 to 19 NOV 2009