

BALLINGER, TEXAS

AL-6881 (FAA)

NDB UBC
239

APP CRS
358°

Rwy Idg **3906**
TDZE **1737**
Apt Elev **1737**

NDB RWY 35
BALLINGER/BRUCE FIELD (E30)

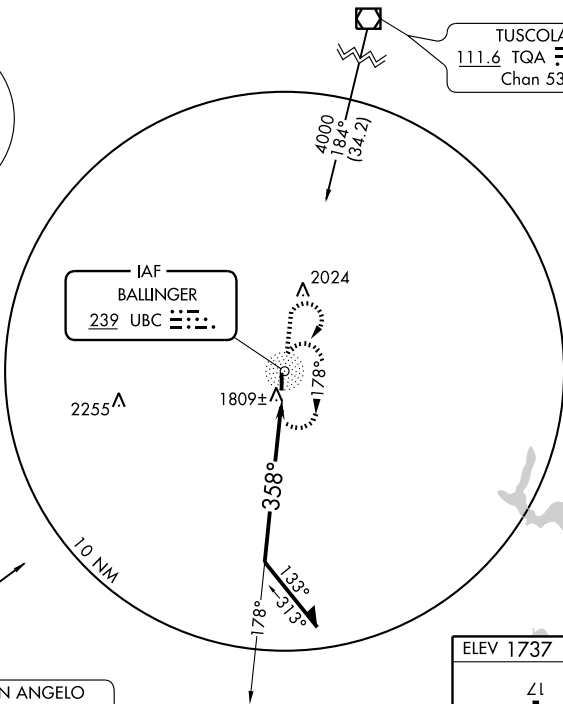
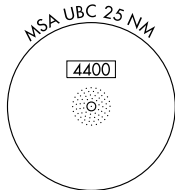
▲ NA

Use San Angelo altimeter setting.

MISSED APPROACH: Climb to 3000, then climbing right turn to 3500 direct UBC NDB and hold.

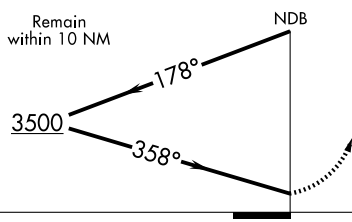
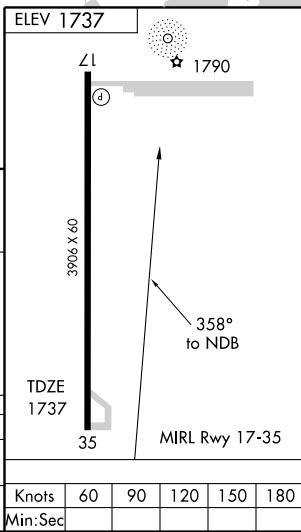
SAN ANGELO APP CON*
125.35 354.1

CTAF
122.9



TUSCOLA
111.6 TQA --- · - -
Chan 53

SAN ANGELO
115.1 SJT --- · - -
Chan 98



CATEGORY	A	B	C	D
S-35	2260-1	523 (600-1)	2260-1½ 523 (600-1½)	NA
CIRCLING	2260-1	523 (600-1)	2260-1½ 523 (600-1½)	NA

Knots	60	90	120	150	180
Min:Sec					

BALLINGER, TEXAS
Amdt 2 06327

31° 40' N-99° 59' W

BALLINGER /BRUCE FIELD (E30)
NDB RWY 35

SC-3, 22 OCT 2009 to 19 NOV 2009

SC-3, 22 OCT 2009 to 19 NOV 2009