

RNAV (GPS) RWY 2

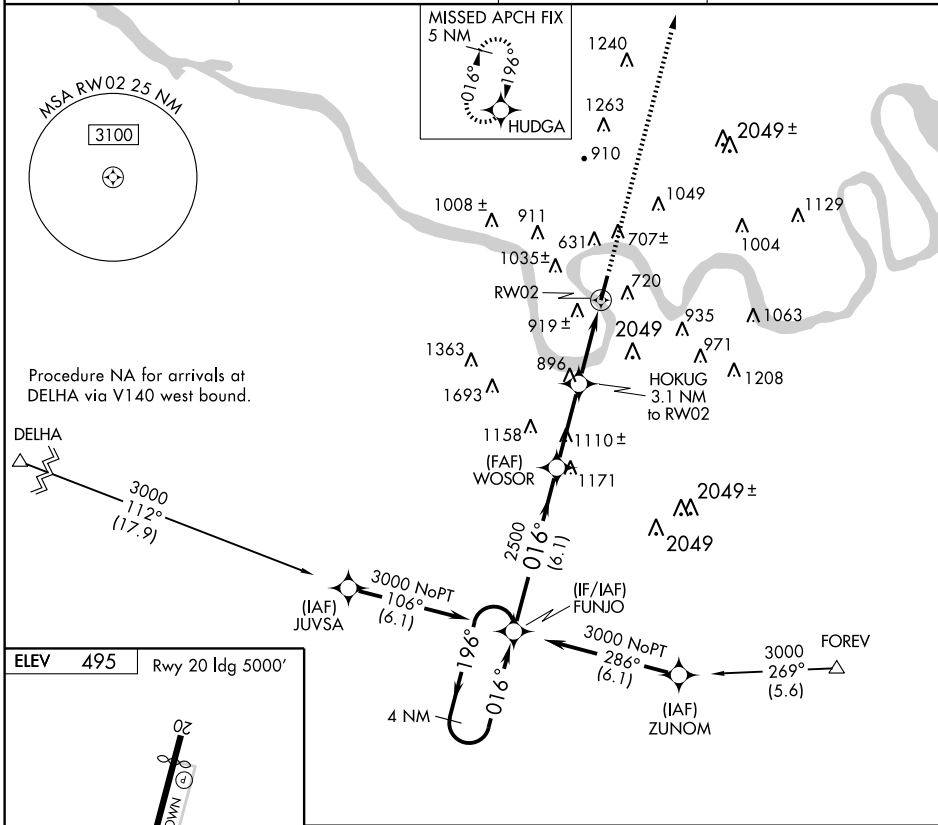
NASHVILLE/JOHN C. TUNE (JWN)

APP CRS	Rwy ldg	5500
016°	TDZE	484
	Apt Elev	495

▼ If local altimeter setting not received, use Nashville Intl altimeter setting and increase all MDA's 40 feet. VDP NA when using Nashville Intl altimeter setting.
▲ Circling NA east of Rwy 2-20. DME/DME RNP-0.3 NA.

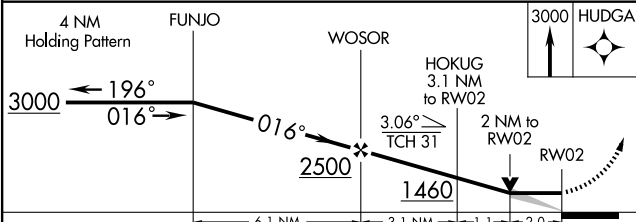
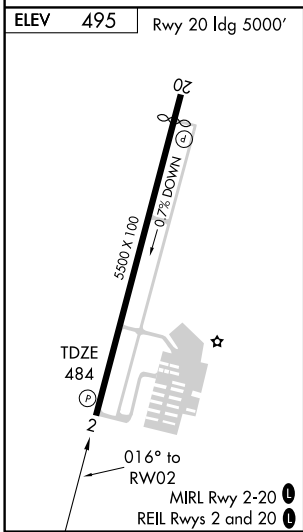
MISSED APPROACH:
Climb to 3000 direct HUDGA and hold.

AWOS-3 127.075	NASHVILLE APP CON 119.35 385.55	CLNC DEL 124.55	UNICOM 122.7(CTAF) 0
--------------------------	---	---------------------------	--------------------------------



SE-1, 22 OCT 2009 to 19 NOV 2009

SE-1, 22 OCT 2009 to 19 NOV 2009



CATEGORY	A	B	C	D
LNAV MDA	1140-1	656 (700-1)	1140-1¾ 656 (700-1¾)	1140-2 656 (700-2)
CIRCLING	1220-1	725 (800-1)	1220-2 725 (800-2)	1400-3 905 (1000-3)