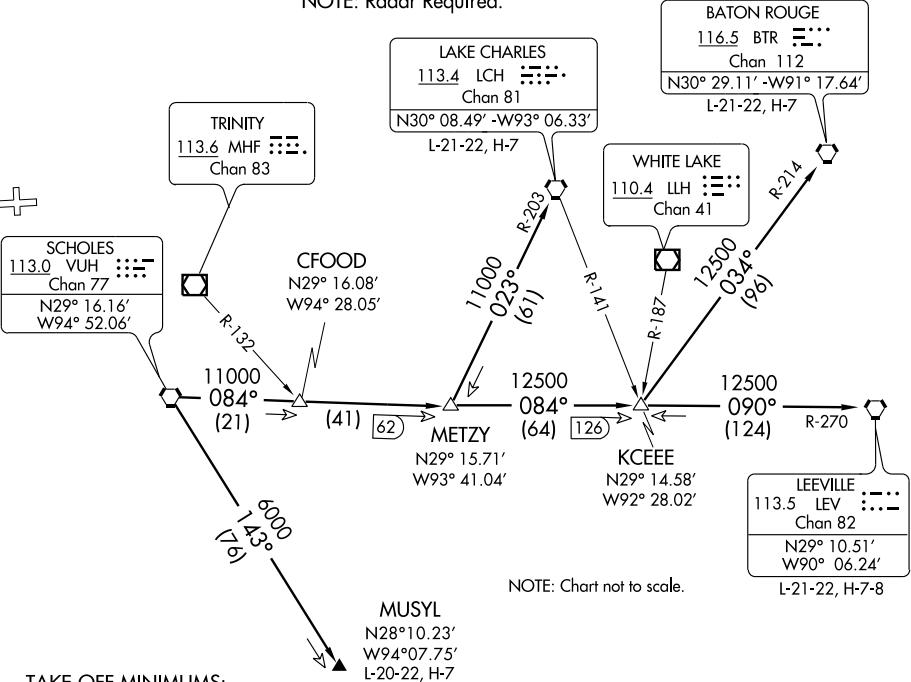


HOUSTON DEP CON  
123.8 257.7  
CTAF  
122.8

NOTE: LCH, BTR, and LEV transitions are ATC assigned only, do not file.  
NOTE: For LCH, BTR, LEV transitions, this procedure requires over water flight not to exceed 35 miles from nearest shoreline.  
NOTE: Radar Required.



NOTE: Chart not to scale.

**TAKE-OFF MINIMUMS:**

Rwy 9, 300-1 or standard with minimum climb of 399' per NM to 400'.  
Rwy 27, standard.

**TAKE-OFF OBSTACLES:**

Rwy 9, Tank 4127' from DER, 1455' left of centerline, 147' AGL/282' MSL.  
Rwy 27, Railroad 462' from DER, 555' left of centerline, 23' AGL/165' MSL.  
Vehicle and road 650' from DER, 7' left of centerline, 17' AGL/159' MSL.

**DEPARTURE ROUTE DESCRIPTION**

When entering controlled airspace, fly assigned heading for vectors to VUH VORTAC, maintain 4000', expect filed altitude 10 minutes after departure.

**BATON ROUGE TRANSITION (VUH3.BTR):** From over VUH VORTAC via VUH R-084 to KCEEE INT, then via BTR R-214 to BTR VORTAC.

**LAKE CHARLES TRANSITION (VUH3.LCH):** From over VUH VORTAC via VUH R-084 to METZY INT, then via LCH R-203 to LCH VORTAC.

**LEEVILLE TRANSITION (VUH3.LEV):** From over VUH VORTAC via VUH R-084 to KCEEE INT, then via LEV R-270 to LEV VORTAC.

**MUSYL TRANSITION (VUH3.MUSYL):** From over VUH VORTAC via VUH R-143 to MUSYL.

SC-5, 22 OCT 2009 to 19 NOV 2009

SC-5, 22 OCT 2009 to 19 NOV 2009