

HOUSTON, TEXAS

AL-6877 (FAA)

APP CRS <b>025°</b>	Rwy Idg <b>N/A</b>
	TDZE <b>N/A</b>
	Apt Elev <b>137</b>

# RNAV (GPS)-G

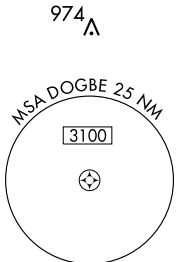
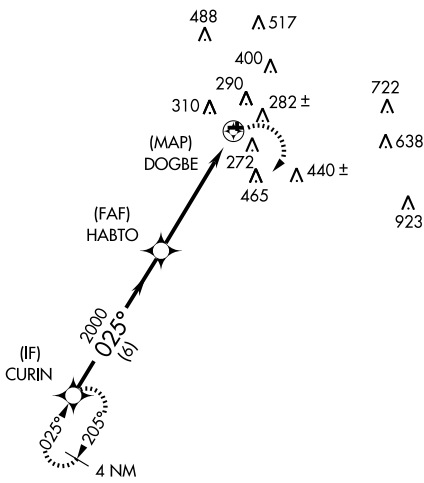
HOUSTON/ WEISER AIR PARK (EYQ)

**∇** Circling not authorized north of runway 9/27.  
**▲ NA** Use George Bush Intercontinental/Houston altimeter setting.  
 DME/DME RNP-0.3 NA.

MISSED APPROACH: Climbing right turn to 2000 direct CURIN and hold.

HOUSTON APP CON  
**123.8 257.7**

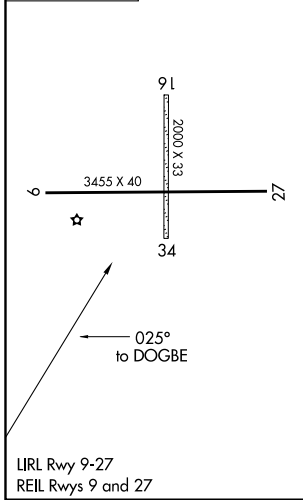
UNICOM  
**122.8 (CTAF)**



SC-5, 22 OCT 2009 to 19 NOV 2009

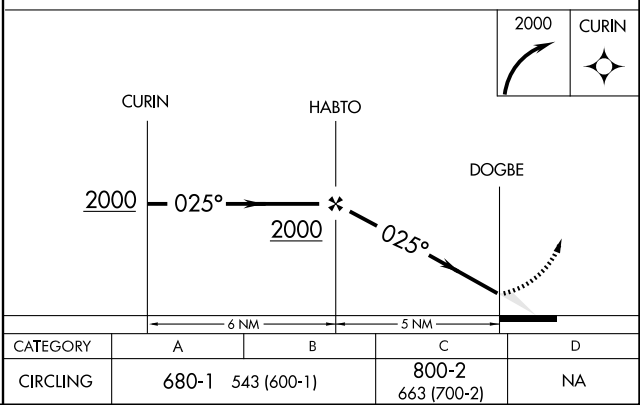
SC-5, 22 OCT 2009 to 19 NOV 2009

ELEV 137



HOUSTON, TEXAS  
Amdt 1 06271

## RADAR REQUIRED



CATEGORY	A	B	C	D
CIRCLING	680-1	543 (600-1)	800-2 663 (700-2)	NA

29°56'N-95°38'W

HOUSTON/ WEISER AIR PARK (EYQ)  
**RNAV (GPS)-G**