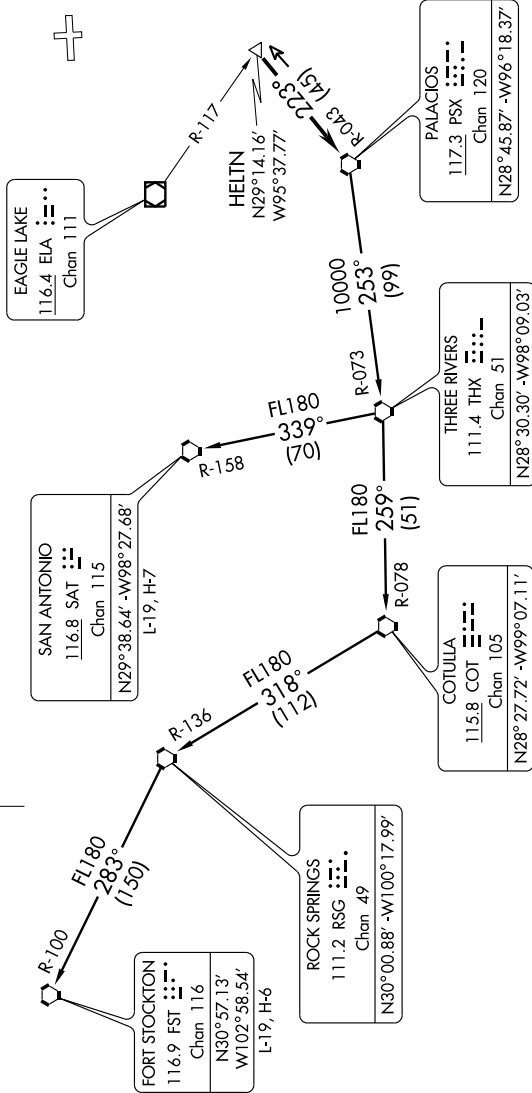


SC-5, 22 OCT 2009 to 19 NOV 2009

HOUSTON DEP CON  
123.8 257.7  
CTAF  
122.8



TAKE-OFF MINIMUMS:  
Rwy 27, standard.  
Rwy 9, 200-1 or standard with minimum climb of 399' per NM to 400.

(NARRATIVE ON FOLLOWING PAGE)

NOTE: Radar Required  
NOTE: Chart not to scale

SC-5, 22 OCT 2009 to 19 NOV 2009