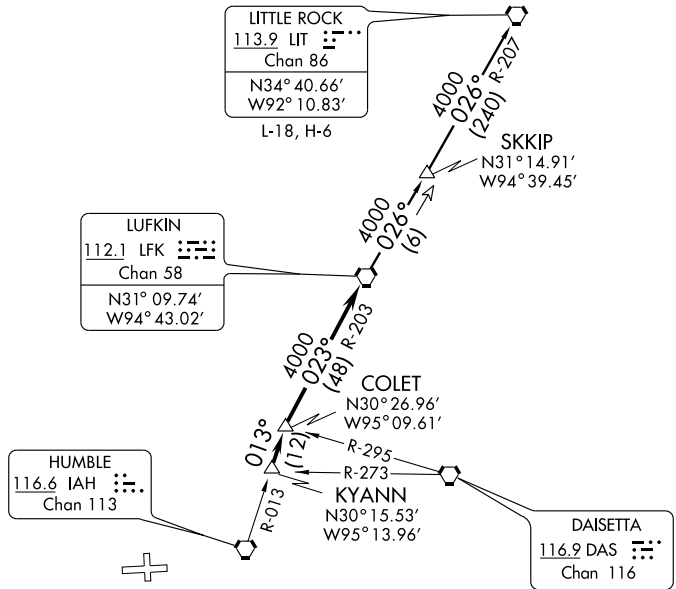


HOUSTON DEP CON
123.8 257.7
CTAF
122.8



TAKE-OFF MINIMUMS:

Rwy 9, 200-1 or standard with minimum climb of 399' per NM to 400.
Rwy 27, standard.

TAKE-OFF OBSTACLES:

Rwy 9, Tank 4127' from DER, 1455' left of centerline, 147' AGL/282' MSL.
Rwy 27, Railroad 462' from DER, 555' left of centerline, 23' AGL/165' MSL.
Vehicle and road 650' from DER, 7' left of centerline, 17' AGL/159' MSL.

NOTE: Radar Required.

NOTE: For aircraft destined LIT, or overflying LIT or PXV.

NOTE: Chart not to scale.



DEPARTURE ROUTE DESCRIPTION

When entering controlled airspace, fly assigned heading for vectors to KYANN INT, maintain 4000', expect filed altitude 10 minutes after departure. Thence . . .

. . . via IAH R-013 to COLET INT, then right turn via LFK R-203 to LFK VORTAC.

LITTLE ROCK TRANSITION (LFK5.LIT): From over LFK VORTAC via LFK R-026 to SKKIP INT, then via LIT R-207 to LIT VORTAC.

SC-5, 22 OCT 2009 to 19 NOV 2009

SC-5, 22 OCT 2009 to 19 NOV 2009