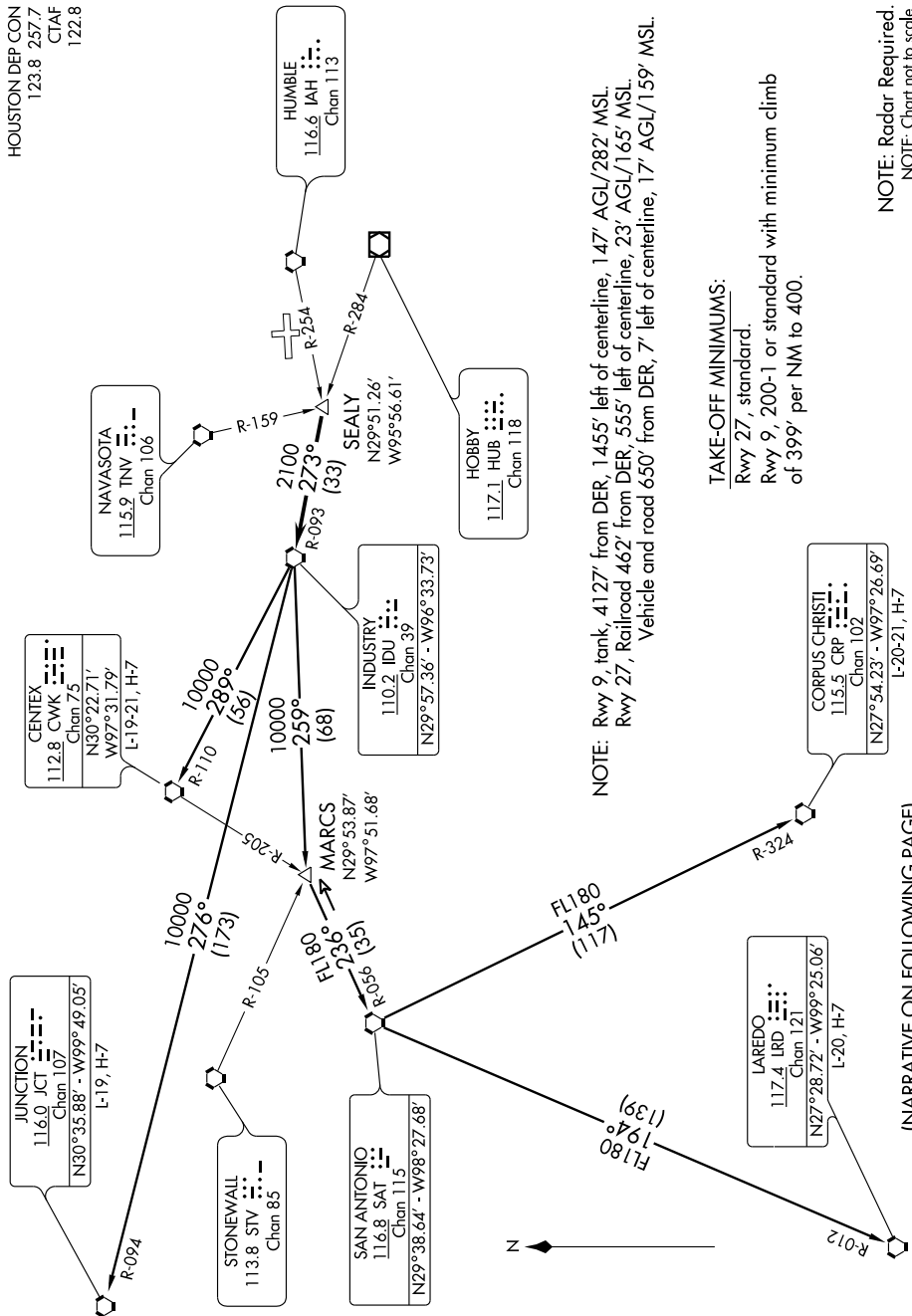


# INDUSTRY THREE DEPARTURE

SL-6877 (FAA)

HOUSTON/WEISER AIR PARK (EYQ)  
HOUSTON, TEXAS

SC-5, 22 OCT 2009 to 19 NOV 2009



# INDUSTRY THREE DEPARTURE

HOUSTON, TEXAS  
HOUSTON/WEISER AIR PARK (EYQ)

HOUSTON DEPCON  
123.8 257.7  
CTAF  
122.8

JUNCTION  
116.0 JCT  
Chan 107  
N30°35.88' - W99°49.05'  
L-19, H-7

NAVASOTA  
115.9 TNV  
Chan 106

STONEWALL  
113.8 STW  
Chan 85

SAN ANTONIO  
116.8 SAT  
Chan 115  
N29°38.64' - W98°27.68'

INDUSTRY  
110.2 IDU  
Chan 39  
N29°57.36' - W96°33.73'

MARCS  
N29°53.87'  
W97°51.68'

SEALY  
N29°51.26'  
W95°56.61'

HOBBY  
HUB  
117.1 HUB  
Chan 118

NOTE: Rwy 9, tank, 4127' from DER, 1455' left of centerline, 147' AGL/282' MSL.  
Rwy 27, Railroad 462' from DER, 555' left of centerline, 23' AGL/165' MSL.  
Vehicle and road 650' from DER, 7' left of centerline, 17' AGL/159' MSL.

TAKE-OFF MINIMUMS:  
Rwy 27, standard.  
Rwy 9, 200-1 or standard with minimum climb  
of 399' per NM to 400.

NOTE: Radar Required.  
NOTE: Chart not to scale.

LAREDO  
117.4 LRD  
Chan 121  
N27°28.72' - W99°25.06'  
L-20, H-7

CORPUS CHRISTI  
115.5 CRP  
Chan 102  
N27°54.23' - W97°26.69'  
L-20-21, H-7

(NARRATIVE ON FOLLOWING PAGE)

SC-5, 22 OCT 2009 to 19 NOV 2009