

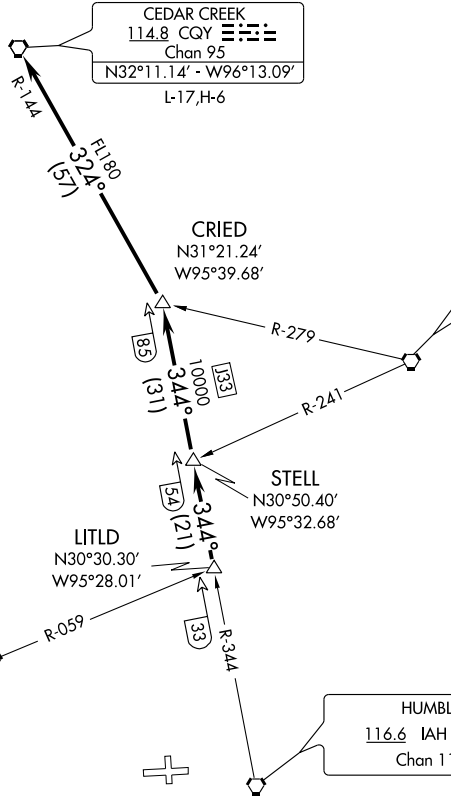
HOUSTON DEP CON
123.8 257.7
CTAF
122.8

CEDAR CREEK
114.8 CQY :
Chan 95
N32°11.14' - W96°13.09'
L-17,H-6

LUFKIN
112.1 LFK :
Chan 58

HUMBLE
116.6 IAH :
Chan 113

NAVASOTA
115.9 TNV :
Chan 106



SC-5, 22 OCT 2009 to 19 NOV 2009

SC-5, 22 OCT 2009 to 19 NOV 2009

TAKE-OFF MINIMUMS:

Rwy 27, standard.
Rwy 9, 200-1 or standard with minimum climb of 399' per NM to 400.

TAKE-OFF OBSTACLES:

Rwy 9, Tank, 4127' from DER, 1455' left of centerline, 147' AGL/282' MSL.
Rwy 27, Railroad 462' from DER, 555' left of centerline, 23' AGL/165' MSL.
Vehicle and road 650' from DER, 7' left of centerline, 17' AGL/159' MSL.

NOTE: Radar Required.

NOTE: Chart not to scale.

DEPARTURE ROUTE DESCRIPTION

When entering controlled airspace, fly assigned heading for vectors to LITLD INT, maintain 4000. Expect filed altitude 10 minutes after departure. Thence
. . . . via IAH R-344 to STELL INT, then via IAH R-344 to CRIED INT, then left turn via CQY R-144 to CQY VORTAC.