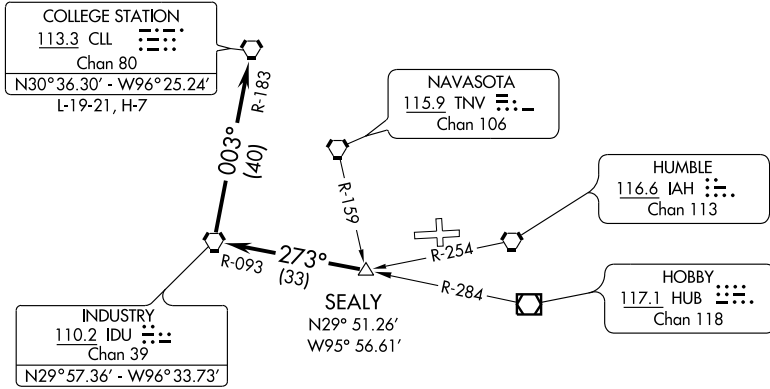


HOUSTON DEP CON
123.8 257.7
CTAF
122.8



TAKE-OFF MINIMUMS:

Rwy 27 standard.

Rwy 9, 200-1 or standard with a minimum climb of 399' per NM to 400'.

TAKE-OFF OBSTACLES:

Rwy 9, Tank 4127' from DER, 1455' left of centerline, 147' AGL/282' MSL.

Rwy 27, Railroad 462' from DER, 555' left of centerline, 23' AGL/165' MSL.

Vehicle and road 650' from DER, 7' left of centerline, 17' AGL/159' MSL.

NOTE: Radar Required.

NOTE: Chart not to scale.



DEPARTURE ROUTE DESCRIPTION

When entering controlled airspace, fly assigned heading for vectors to SEALY INT, maintain 4000, expect filed altitude 10 minutes after departure, Thence

. . . . via IDU R-093 to IDU VORTAC, then right turn via IDU R-003 and CLL R-183 to CLL VORTAC.

SC-5, 22 OCT 2009 to 19 NOV 2009

SC-5, 22 OCT 2009 to 19 NOV 2009