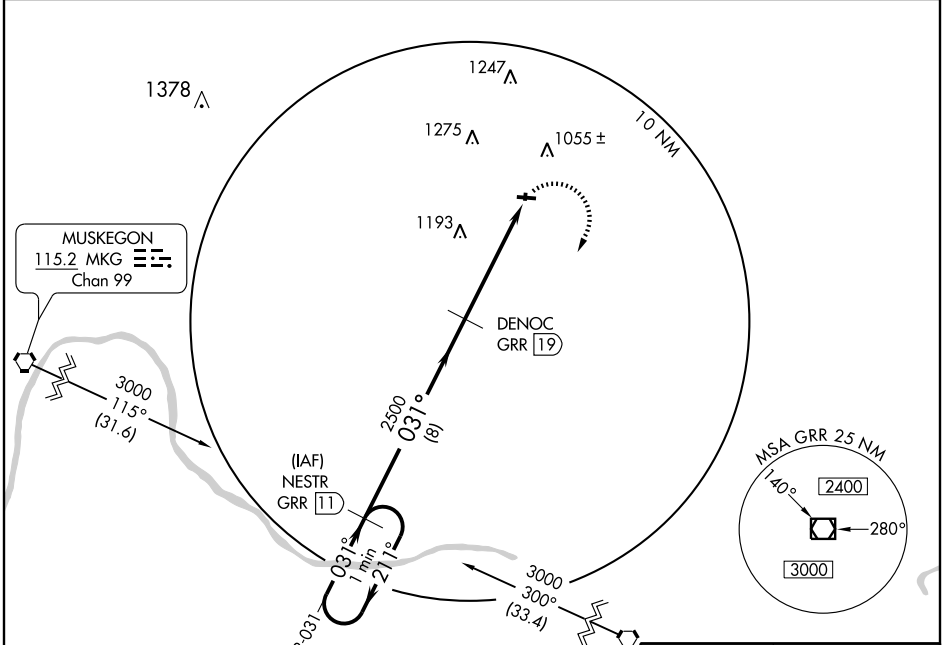


VOR/DME GRR 115.95 Chan 106 (Y)	APP CRS 031°	Rwy Idg TDZE Apt Elev N/A N/A 855
--	------------------------	---

VOR/DME-A
GREENVILLE MUNI (6D6)

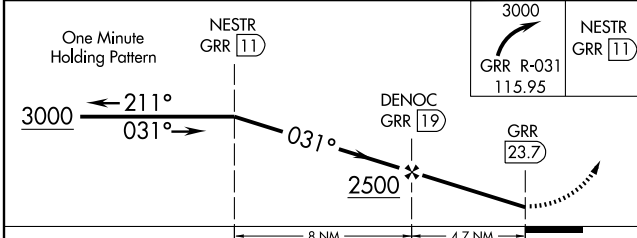
NA Use Grand Rapids/Gerald R. Ford Intl altimeter setting. MISSED APPROACH: Climbing right turn to 3000 via the GRR VOR/DME R-031 to NESTR and hold.

GRAND RAPIDS APP CON ★ 124.6 257.6	UNICOM 122.8 (CTAF) 0
--	---------------------------------



EC-1, 22 OCT 2009 to 19 NOV 2009

EC-1, 22 OCT 2009 to 19 NOV 2009



CATEGORY	A	B	C	D
CIRCLING	1500-1 645 (700-1)	1500-1¼ 645 (700-1¼)	1500-1¾ 645 (700-1¾)	NA

REIL Rwy 28 0
MIRL Rwy 10-28 0