

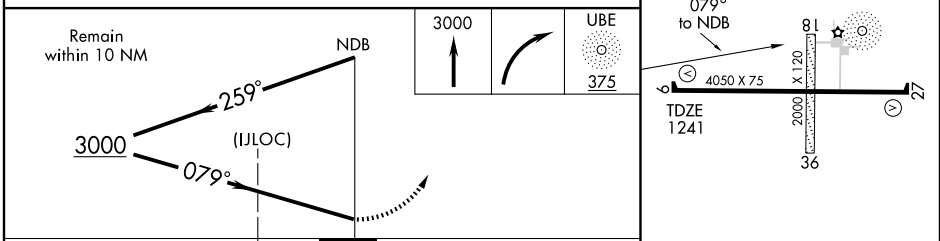
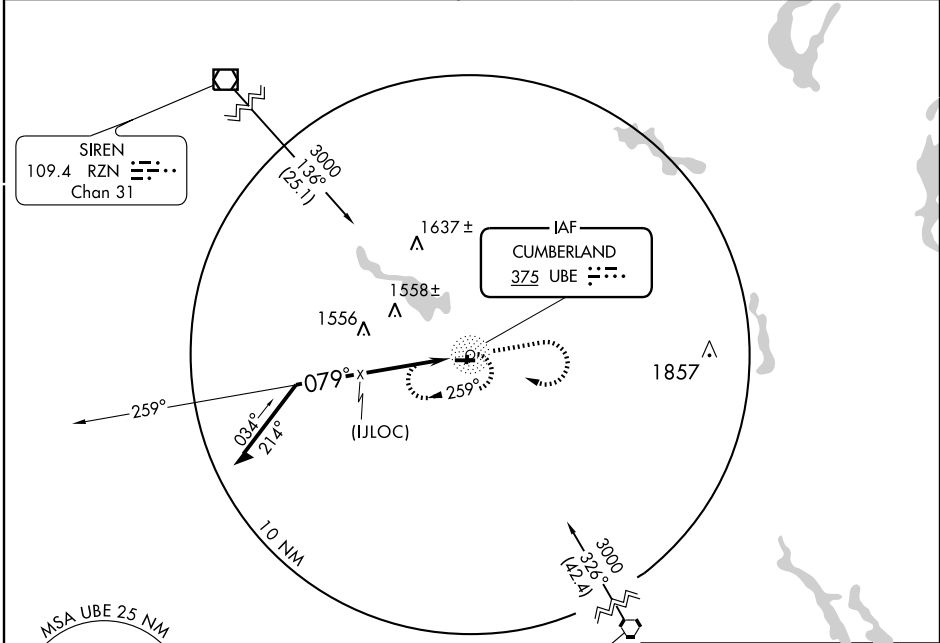
# NDB or GPS RWY 9

CUMBERLAND MUNI (UBE)

NDB UBE <b>375</b>	APP CRS <b>079°</b>	Rwy Idg <b>4050</b>
		TDZE <b>1241</b>
		Apt Elev <b>1241</b>

**▲ NA** Use Rice Lake altimeter setting. MISSED APPROACH: Climb to 3000, then right turn direct UBE NDB and hold.

GCO <b>121.725</b>	GREEN BAY RADIO <b>122.3</b>	UNICOM <b>122.8 (CTAF) 0</b>
-----------------------	---------------------------------	---------------------------------



CATEGORY	A	B	C	D
S-9	2000-1 759 (800-1)	2000-1¼ 759 (800-1¼)	2000-2¼ 759 (800-2¼)	NA
CIRCLING	2000-1 759 (800-1)	2000-1¼ 759 (800-1¼)	2000-2¼ 759 (800-2¼)	NA

REIL Rwy 27	0
MIRL Rwy 9-27	0

Knots	60	90	120	150	180
Min:Sec					