

WAAS CH <b>61208</b> <b>W30A</b>	APP CRS <b>303°</b>	Rwy Idg <b>3197</b> TDZE <b>455</b> Apt Elev <b>455</b>
--	------------------------	---

# RNAV (GPS) RWY 30

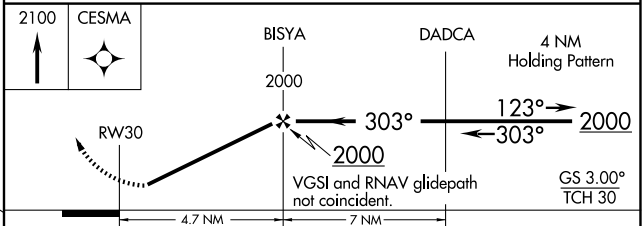
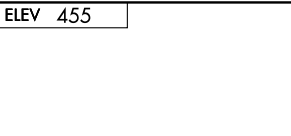
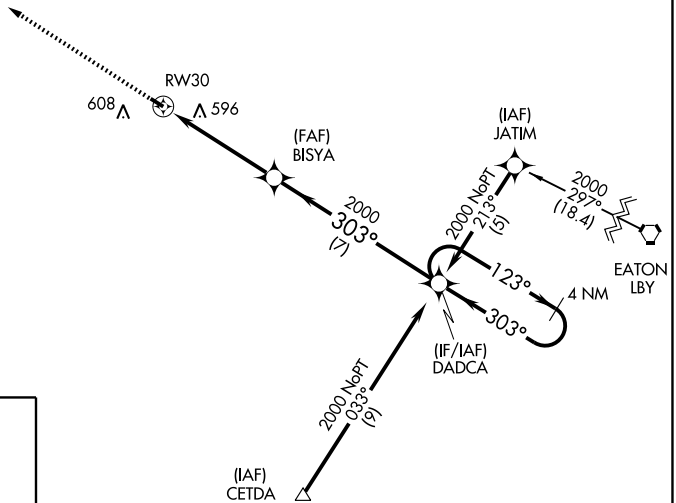
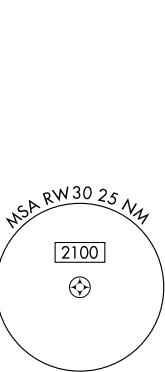
PRENTISS-JEFFERSON DAVIS COUNTY (M43)

**▼** Use Hattiesburg-Laurel Rgnl altimeter setting; when not received, use McComb altimeter setting. DME/DME RNP-0.3 NA. Visibility reduction by helicopters NA.

**▲** NA MISSED APPROACH: Climb to 2100 direct CESMA and hold.

HATTIESBURG-LAUREL REGIONAL AWOS-3 <b>128.325</b>	HOUSTON CENTER <b>126.8 327.8</b>	UNICOM <b>122.8 (CTAF) 121.9 0</b>
--	--------------------------------------	---------------------------------------

949 **▲**



CATEGORY	A	B	C	D
LPV DA	866-1½ 411 (500-1½)			NA
LNAV MDA	940-1	485 (500-1)	940-1¼ 485 (500-1¼)	NA
CIRCLING	1020-1	565 (600-1)	1020-1½ 565 (600-1½)	NA

SC-4, 22 OCT 2009 to 19 NOV 2009

SC-4, 22 OCT 2009 to 19 NOV 2009