

RNAV (GPS) RWY 12

PRENTISS-JEFFERSON DAVIS COUNTY (M43)

WAAS CH 90408 W12A	APP CRS 123°	Rwy Idg TDZE 455 Apt Elev 455	3197
--	------------------------	---	-------------

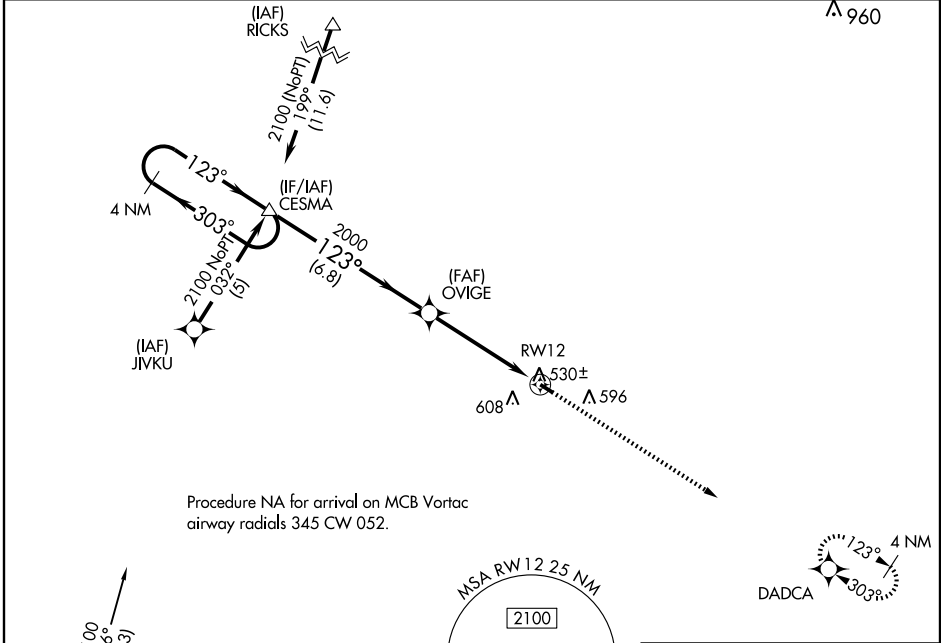
▽ DME/DME RNP-0.3 NA. Visibility reduction by helicopters NA.
△ NA Use Hattiesburg-Laurel Rgnl altimeter setting; when not received, use McComb altimeter setting.

MISSED APPROACH: Climb to 2000 direct DADCA and hold.

HATTIESBURG-LAUREL REGIONAL AWOS-3
128.325

HOUSTON CENTER
126.8 327.8

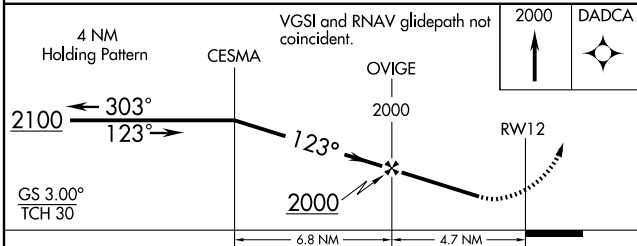
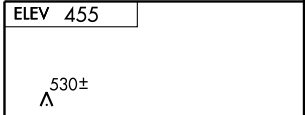
UNICOM
122.8 (CTAF) 121.9



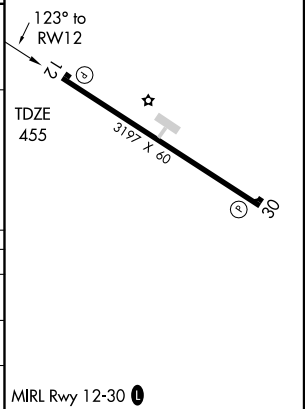
Procedure NA for arrival on MCB Vortac airway radials 345 CW 052.

SC-4, 22 OCT 2009 to 19 NOV 2009

SC-4, 22 OCT 2009 to 19 NOV 2009



CATEGORY	A	B	C	D
LPV DA	824-1¼ 369 (400-1¼)			NA
LNAV MDA	880-1	425 (500-1)	880-1¼ 425 (500-1¼)	NA
CIRCLING	1020-1	565 (600-1)	1020-1½ 565 (600-1½)	NA



RNAV (GPS) RWY 12

MIRL Rwy 12-30