

PRAGUE, OKLAHOMA

AL-6872 (FAA)

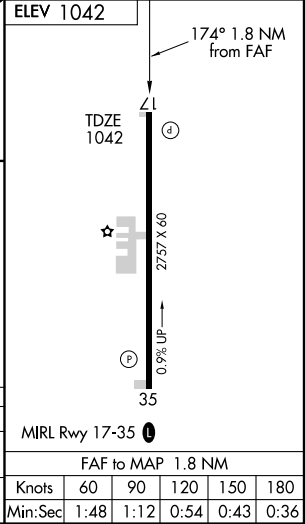
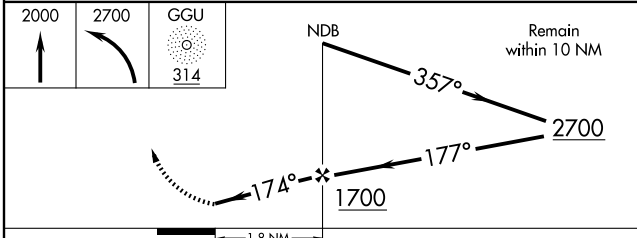
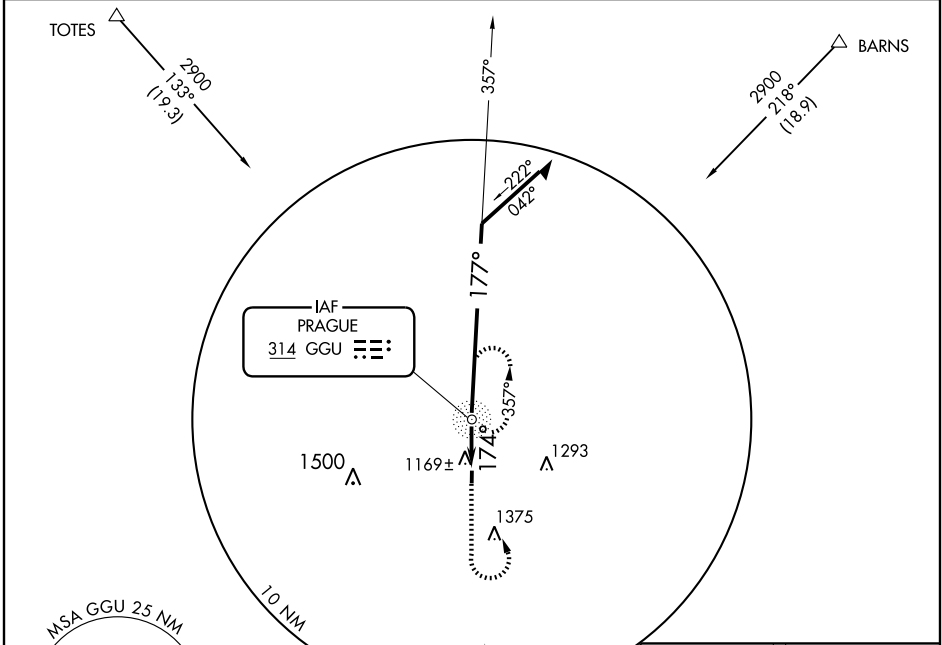
NDB RWY 17

PRAGUE MUNI (O47)

NDB GGU 314	APP CRS 174°	Rwy Idg 2757
		TDZE 1042
		Apt Elev 1042

NA Use Oklahoma City/Will Rogers World altimeter setting. MISSED APPROACH: Climb to 2000 then climbing left turn to 2700 direct GGU NDB and hold.

FORT WORTH CENTER **132.2 338.35** CTAF **122.9**



CATEGORY	A	B	C	D
S-17	1620-1	578 (600-1)	1620-1½ 578 (600-1½)	NA
CIRCLING	1620-1	578 (600-1)	1620-1½ 578 (600-1½)	NA

PRAGUE, OKLAHOMA
Amdt 1A 08213

35°29'N-96°43'W

PRAGUE MUNI (O47)

NDB RWY 17

SC-1, 22 OCT 2009 to 19 NOV 2009

SC-1, 22 OCT 2009 to 19 NOV 2009