

DOUGLAS, WYOMING

AL-6870 (FAA)

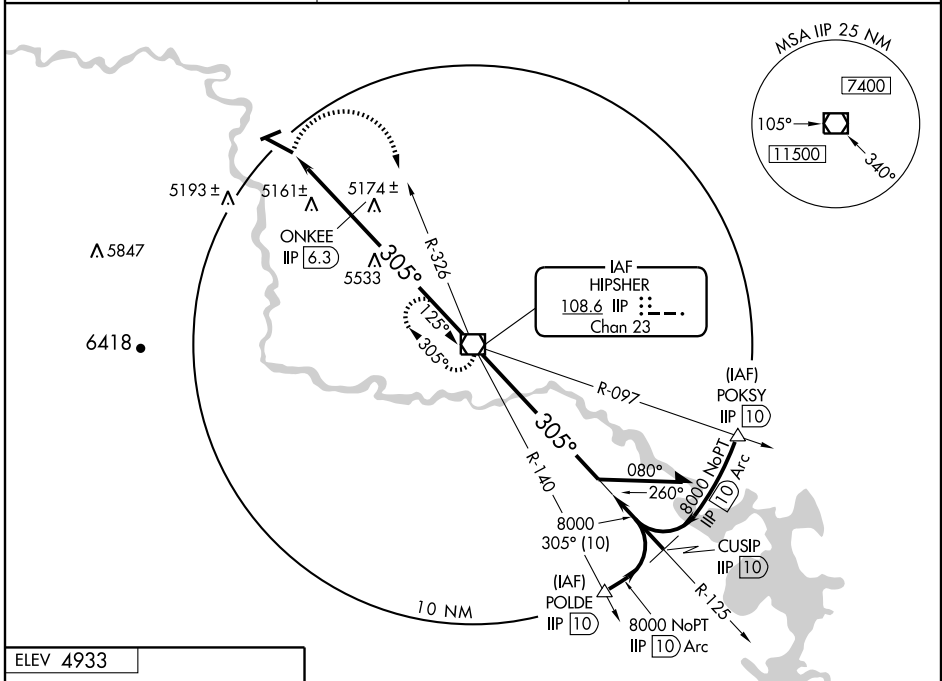
# VOR RWY 29

DOUGLAS / CONVERSE COUNTY (DGW)

VOR/DME IIP	APP CRS	Rwy Idg	<b>6534</b>
<b>108.6</b>	<b>305°</b>	TDZE	<b>4933</b>
Chan <b>23</b>		Apt Elev	<b>4933</b>

**MISSED APPROACH:** Climbing right turn to 8000 via heading 160° and IIP VOR/DME R-326 to IIP VOR/DME and hold, continue climb-in-hold to 8000.

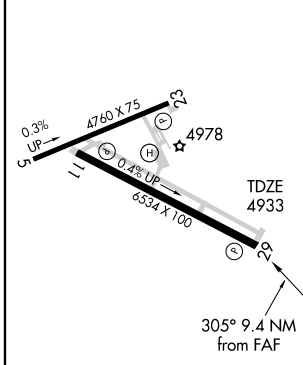
ASOS <b>135.225</b>	DENVER CENTER <b>135.6 363.025</b>	UNICOM <b>122.8 (CTAF) 0</b>
------------------------	---------------------------------------	---------------------------------



NW-1, 22 OCT 2009 to 19 NOV 2009

NW-1, 22 OCT 2009 to 19 NOV 2009

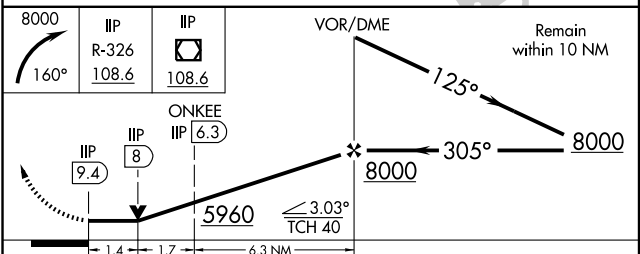
ELEV 4933



REIL Rwy 29 0  
MIRL Rws 11-29 and 5-23 0

FAF to MAP 9.4 NM

Knots	60	90	120	150	180
Min:Sec	9:24	6:16	4:42	3:46	3:08



CATEGORY	A	B	C	D
S-29	5960-1¼ 1027 (1100-1¼)	5960-1½ 1027 (1100-1½)	5960-3	1027 (1100-3)
CIRCLING	5960-1¼ 1027 (1100-1¼)	5960-1½ 1027 (1100-1½)	5960-3	1027 (1100-3)
ONKEE FIX MINIMUMS				
S-29	5420-1	487 (500-1)	5420-1¼ 487 (500-1¼)	5420-1½ 487 (500-1½)
CIRCLING	5520-1	587 (600-1)	5520-1½ 587 (600-1½)	5540-2 607 (700-2)

DOUGLAS, WYOMING  
Amdt 1A 09267

42°48'N-105°23'W

DOUGLAS / CONVERSE COUNTY (DGW)  
**VOR RWY 29**