

DOUGLAS, WYOMING

AL-6870 (FAA)

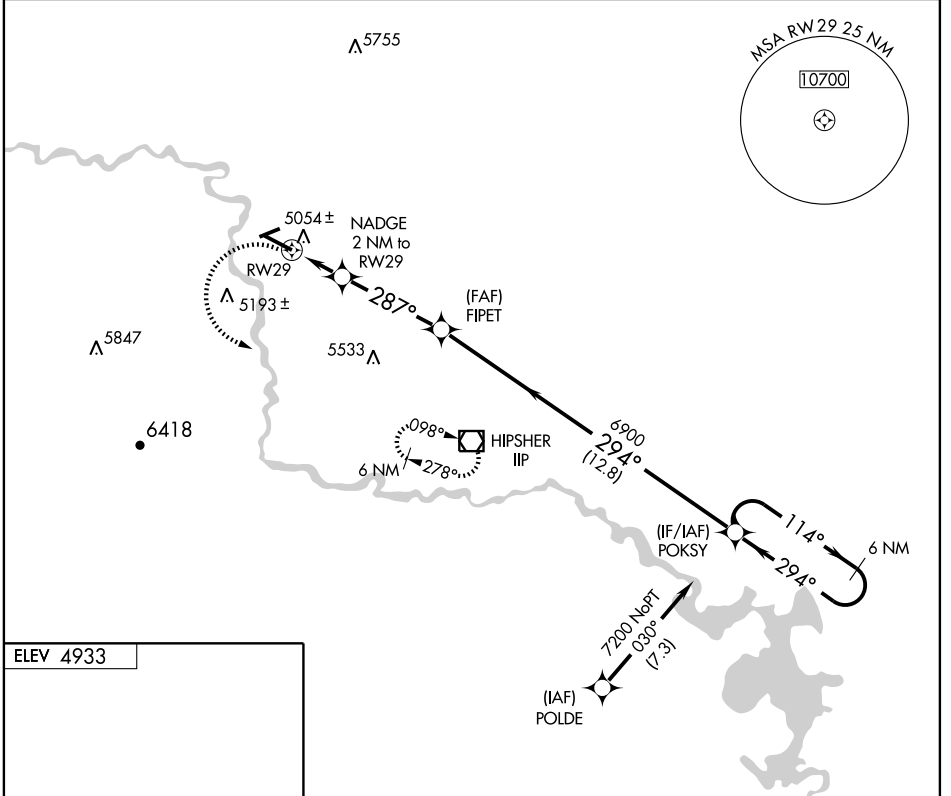
RNAV (GPS) RWY 29

DOUGLAS / CONVERSE COUNTY (DGW)

APP CRS 287°	Rwy Idg 6534
	TDZE 4933
	Apt Elev 4933

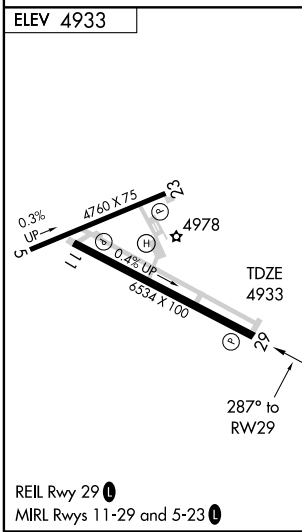
▽ DME/DME RNP- 0.3 NA.	MISSED APPROACH: Climbing left turn to 7900 direct IIP VOR/DME and hold, continue-in-hold to 7900.
-------------------------------	----------------------------------------------------------------------------------------------------

ASOS 135.225	DENVER CENTER 135.6 363.025	UNICOM 122.8 (CTAF) 0
------------------------	---------------------------------------	---------------------------------



NW-1, 22 OCT 2009 to 19 NOV 2009

NW-1, 22 OCT 2009 to 19 NOV 2009



	7900 IIP	NADGE 2 NM to RW29	FIPET	POKSY 6 NM Holding Pattern	7200
		1.2 NM to RW29	3.00° TCH 40	114°	294°
		0.8	4.1 NM	12.8 NM	
CATEGORY	A	B	C	D	
LNAV MDA	5360-1	427 (500-1)	5360-1¼ 427 (500-1¼)	5360-1½ 427 (500-1½)	
CIRCLING	5520-1	587 (600-1)	5520-1½ 587 (600-1½)	5540-2 607 (700-2)	

DOUGLAS, WYOMING
Orig-A 09267

42°48'N-105°23'W

DOUGLAS / CONVERSE COUNTY (DGW)

RNAV (GPS) RWY 29