

PERU, ILLINOIS

AL-6866 (FAA)

RNAV (GPS) RWY 36

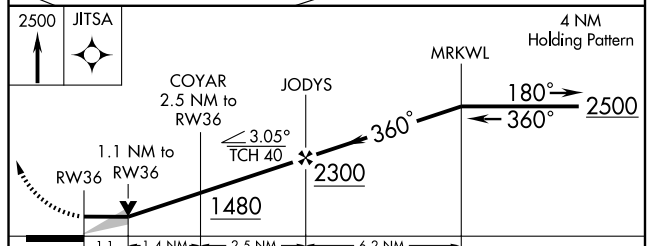
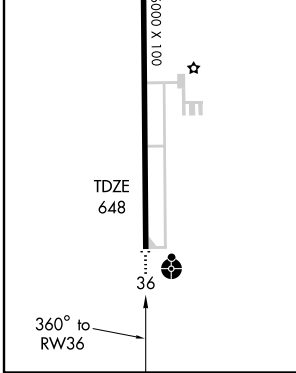
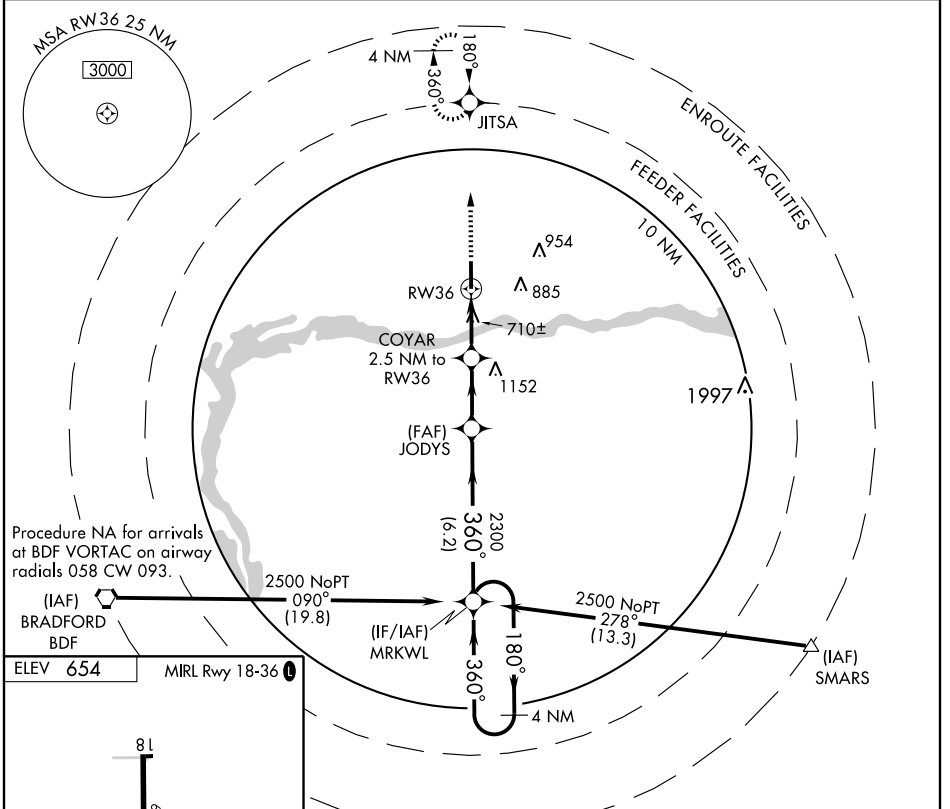
PERU/ILLINOIS VALLEY RGNL-WALTER A. DUNCAN FIELD (VYS)

APP CRS	Rwy Idg	6000
360°	TDZE	648
	Apt Elev	654

⚠ If local altimeter setting not received, use Marshall County altimeter setting and increase all MDAs 80'. DME/DME RNP-0.3 NA.
⚠ VDP NA when using Marshall County altimeter setting.

ODALS **MISSED APPROACH:** Climb to 2500 direct JITSA and hold.

AWOS-3 120.025	CHICAGO CENTER 123.75 354.0	UNICOM 123.0 (CTAF) 0
--------------------------	---------------------------------------	---------------------------------



CATEGORY	A	B	C	D
LNAV MDA	1020-3/4		372 (400-3/4)	1020-1/4 372 (400-1/4)
CIRCLING	1060-1 406 (500-1)	1160-1 506 (600-1)	1160-1 1/2 506 (600-1 1/2)	1240-2 586 (600-2)

PERU, ILLINOIS
Orig 07298

PERU/ILLINOIS VALLEY RGNL-WALTER A. DUNCAN FIELD (VYS)
41° 21'N-89° 09'W

RNAV (GPS) RWY 36

EC-3, 22 OCT 2009 to 19 NOV 2009

EC-3, 22 OCT 2009 to 19 NOV 2009