

RNAV (GPS) RWY 18

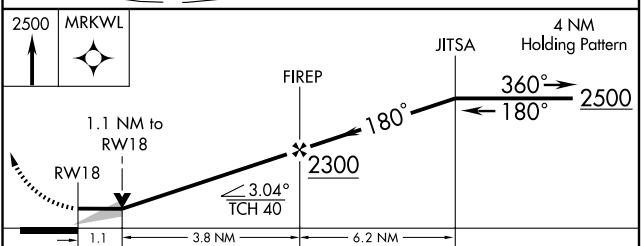
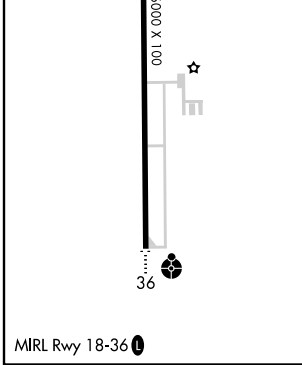
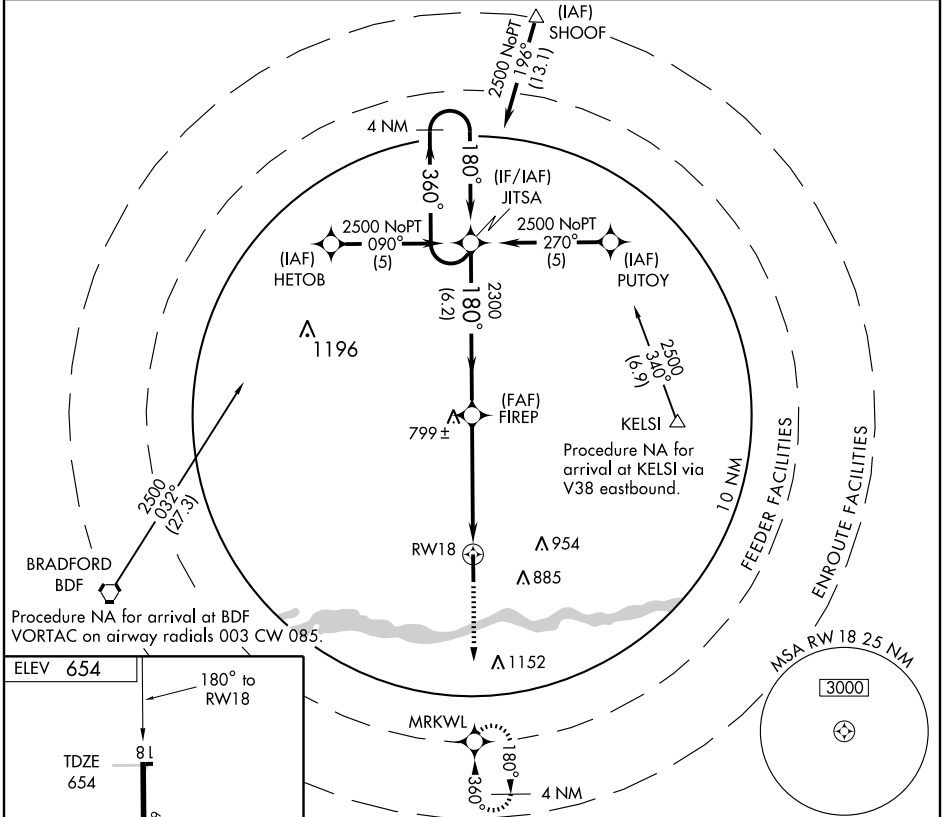
PERU/ILLINOIS VALLEY RGNL-WALTER A. DUNCAN FIELD (VYS)

APP CRS	Rwy Idg	6000
180°	TDZE	654
	Apt Elev	654

⚠ If local altimeter setting not received, use Marshall County altimeter setting and increase all MDAs 80'. DME/DME RNP-0.3 NA.
⚠ VDP NA when using Marshall County altimeter setting.

MISSED APPROACH: Climb to 2500 direct MRKWL and hold.

AWOS-3 120.025	CHICAGO CENTER 123.75 354.0	UNICOM 123.0 (CTAF) 0
--------------------------	---------------------------------------	---------------------------------



CATEGORY	A	B	C	D
LNAV MDA	1060-1	406 (500-1)	1060-1¼	406 (500-1¼)
CIRCLING	1060-1 406 (500-1)	1160-1 506 (600-1)	1160-1½ 506 (600-1½)	1240-2 586 (600-2)

RNAV (GPS) RWY 18

EC-3, 22 OCT 2009 to 19 NOV 2009

EC-3, 22 OCT 2009 to 19 NOV 2009