

MONETA, VIRGINIA

AL-6865 (FAA)

VORTAC LYH <b>109.2</b> Chan <b>29</b>	APP CRS <b>247°</b>	Rwy ldg <b>3058</b> TDZE <b>893</b> Apt Elev <b>893</b>
--	------------------------	---

# VOR/DME or GPS RWY 23

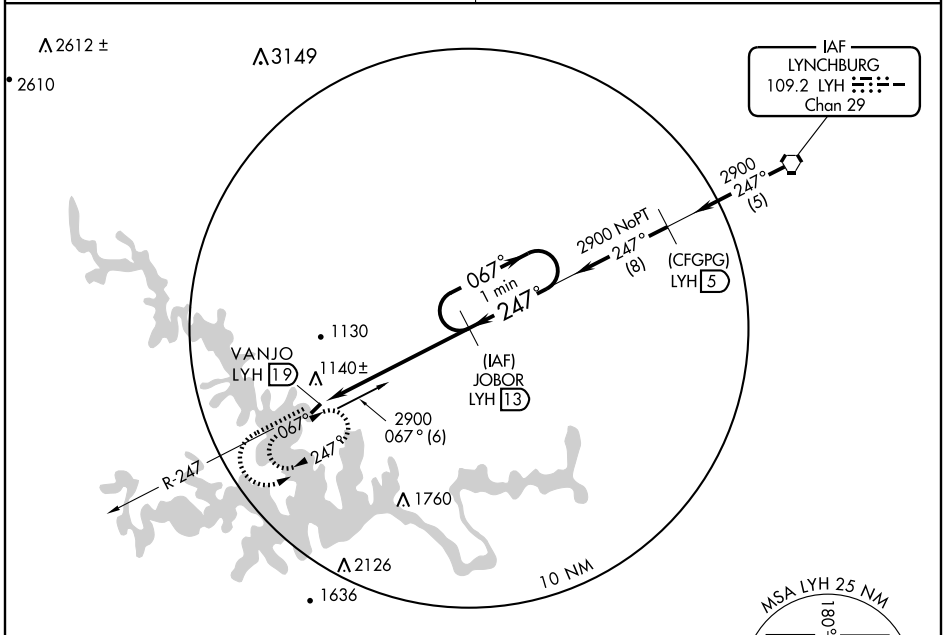
MONETA/SMITH MOUNTAIN LAKE (W91)

**▼** Use Lynchburg altimeter setting; if not received, use Roanoke altimeter setting and increase all MDAs 60 feet. Procedure not authorized at night except by prior arrangement for runway lights.

**▲ NA**

MISSED APPROACH: Climb straight ahead to 2900 then left turn to VANJO 19 DME via LYH R-247 and hold.

ROANOKE APP CON <b>135.0 254.32</b>	UNICOM <b>122.8 (CTAF)</b>
--	-------------------------------



NE-3, 22 OCT 2009 to 19 NOV 2009

NE-3, 22 OCT 2009 to 19 NOV 2009

ELEV 893 Rwy 5 ldg 2808'

247° 6 NM from FAF

2900 ↑ LYH R-247 109.2 VANJO LYH 19

One Minute Holding Pattern

JOBOR LYH 13

067° → 2900 ← 247°

VANJO LYH 19

247°

6 NM

Knots	60	90	120	150	180			
Min:Sec								
CATEGORY	A		B		C	D		
S-23	1 540-1		647 (700-1)		NA			
CIRCLING	1 540-1		647 (700-1)		NA			

MONETA, VIRGINIA  
Orig-A 08157

MONETA/SMITH MOUNTAIN LAKE (W91)  
37°06'N - 79°36'W  
**VOR/DME or GPS RWY 23**