

# RNAV (GPS) RWY 36

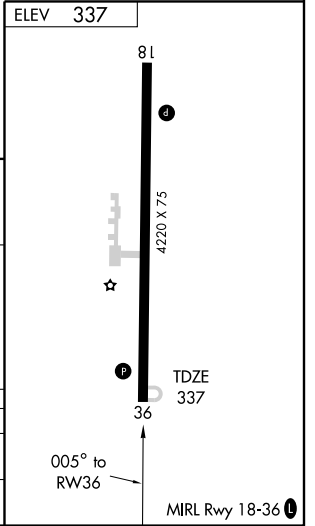
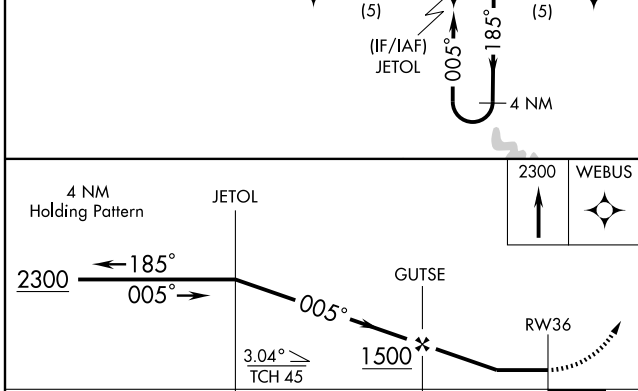
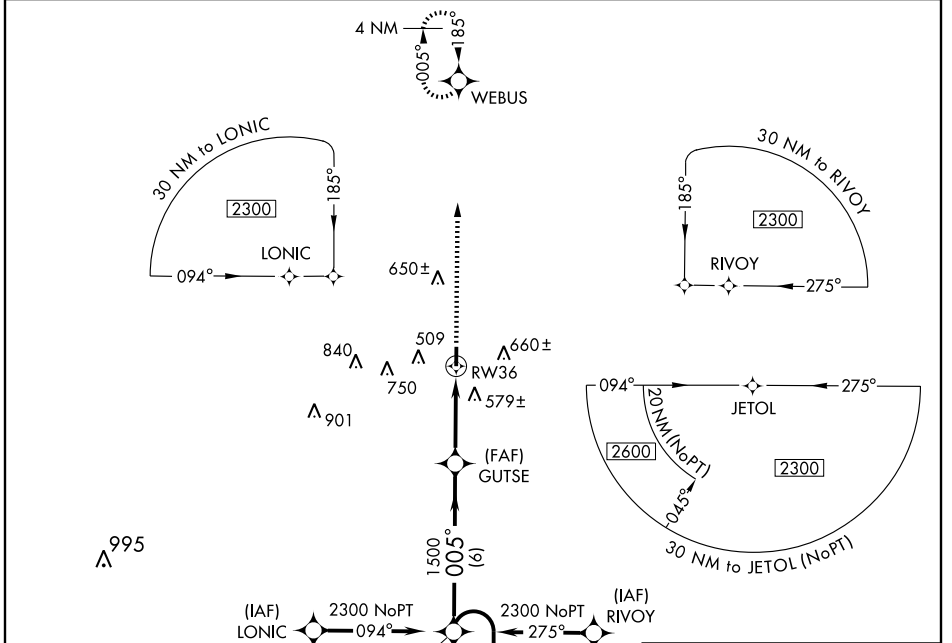
MONTEZUMA/ DR. C. P. SAVAGE SR. (53A)

APP CRS	Rwy Idg	<b>4220</b>
<b>005°</b>	TDZE	<b>337</b>
	Apt Elev	<b>337</b>

**▽** GPS or RNP-0.3 Required. DME/DME RNP-0.3 NA.  
**△NA** Use Americus altimeter setting; if not received use Macon altimeter setting and increase all MDAs 20 feet.

MISSED APPROACH: Climb to 2300 direct WEBUS WP and hold.

ATLANTA APP CON★ <b>124.2 279.6</b>	CTAF <b>122.9</b>
--	----------------------



CATEGORY	A	B	C	D
LNVA MDA	900-1	563 (600-1)	900-1½ 563 (600-1½)	NA
CIRCLING	1020-1	683 (700-1)	1020-2 683 (700-1)	NA

SE-4, 22 OCT 2009 to 19 NOV 2009

SE-4, 22 OCT 2009 to 19 NOV 2009