

RNAV (GPS) RWY 22

ALBUQUERQUE/DOUBLE EAGLE II (A/E/G)

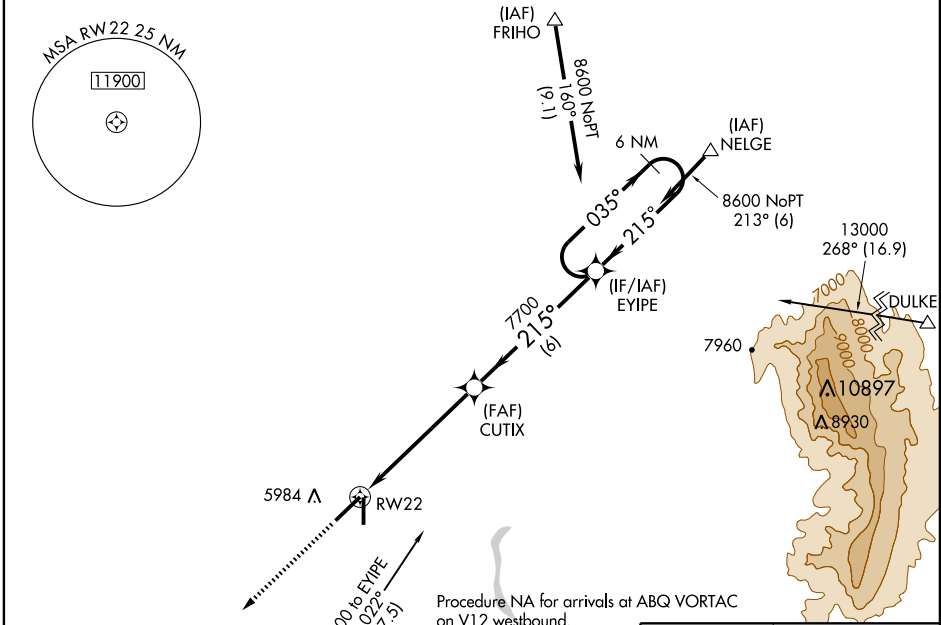
APP CRS 215°	Rwy Idg 7398
	TDZE 5817
	Apt Elev 5837

▼ Baro-VNAV NA below -26°C (-1.5°F).
▲ NA DME/DME RNP-0.3 NA.
W For inoperative MALS, increase LNAV Cat. D visibility to 1¼ and LNAV/VNAV Cat D to 1.

MALS

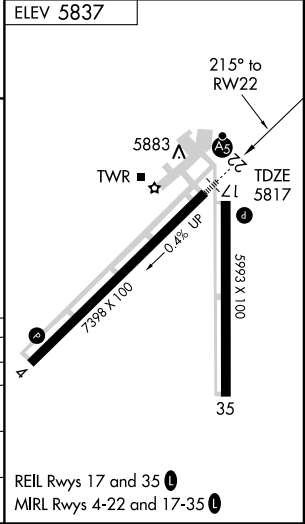
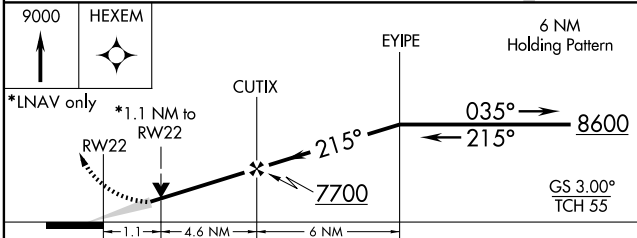
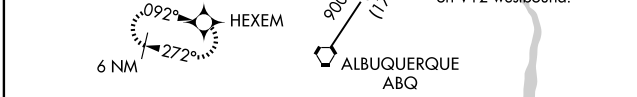
MISSED APPROACH: Climb to 9000 direct HEXEM WP and hold.

AWOS-3 119.025	ALBUQUERQUE APP CON 127.4 253.5	DOUBLE EAGLE II TOWER * 120.15 (CTAF) 	GND CON 121.625	ALBUQUERQUE CLNC DEL 124.8
--------------------------	---	---	---------------------------	--------------------------------------




SW-1, 22 OCT 2009 to 19 NOV 2009

SW-1, 22 OCT 2009 to 19 NOV 2009



CATEGORY	A	B	C	D
GLS PA DA	NA			
LNAV/VNAV DA	6140-½ 323 (400-½)		6140-¾ 323 (400-¾)	
LNAV MDA	6200-½ 383 (400-½)		6200-1 383 (400-1)	
CIRCLING	6400-1 563 (600-1)		6400-2 563 (600-2)	

REIL Rwy 17 and 35 
 MIRL Rwy 4-22 and 17-35 