

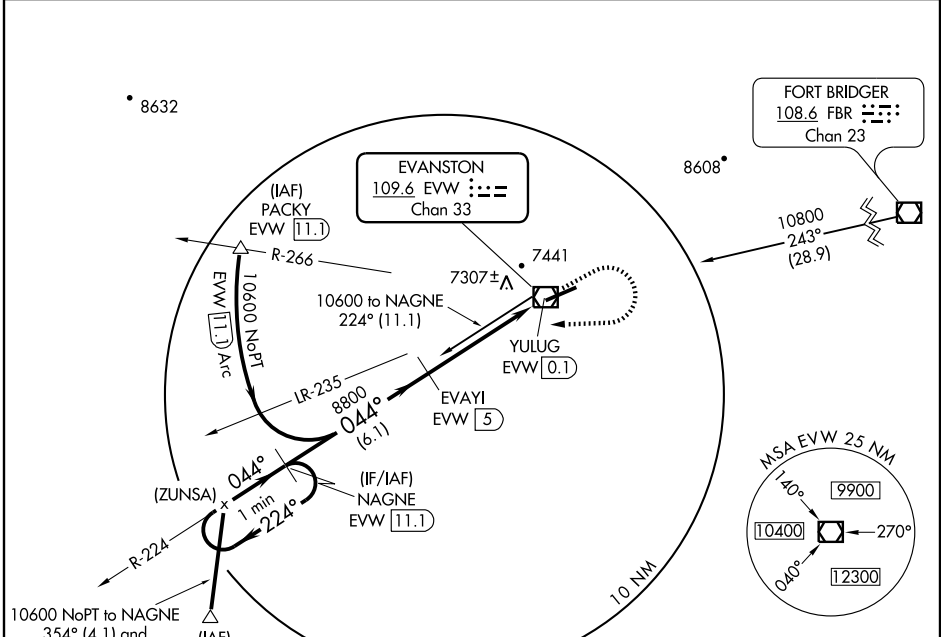
VOR/DME RWY 5

EVANSTON-UINTA COUNTY BURNS FIELD (E V W)

VOR/DME EVW 109.6 Chan 33	APP CRS 044°	Rwy Idg TDZE Apt Elev	7300 7141 7143
--	------------------------	-----------------------------	---

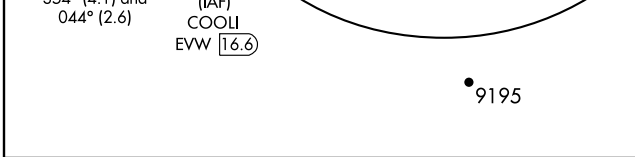
▽ If local altimeter setting not received, procedure NA. MISSED APPROACH: Climb to 7600, then climbing right turn to 10600 via heading 255° and EVW VOR/DME R-224 to NAGNE/11.1 DME and hold, continue climb-in-hold to 10600.

ASOS 120.0	SALT LAKE CENTER 127.7 354.125	GCO 121.72	UNICOM 123.0 (CTAF) 📻
----------------------	--	----------------------	--

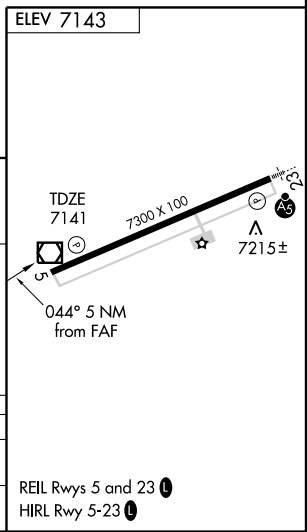


NW-1, 22 OCT 2009 to 19 NOV 2009

NW-1, 22 OCT 2009 to 19 NOV 2009



One Minute Holding Pattern	NAGNE EVW [11.1]	7600	10600	EVW R-224 109.6	NAGNE EVW [11.1]
10600	← 224°	↑	↘ 255°	↘ 044°	↘ 044°
	044°			3.06° TCH 55	YULUG EVW [0.1]
				EVAYI EVW [5]	
				8800	
				6.1 NM	3.8 NM
					1.2 NM



CATEGORY	A	B	C	D
S-5	7560-1	419 (500-1)	7560-1 ¼	419 (500-1 ¼)
CIRCLING	7580-1 437 (500-1)	7720-1 577 (600-1)	7760-1 ¾ 617 (700-1 ¾)	7760-2 617 (700-2)

REIL Rwy 5 and 23 **📻**
HIRL Rwy 5-23 **📻**