

VOR/DME EVW 109.6 Chan 33	APP CRS 237°	Rwy Idg 7300 TDZE 7143 Apt Elev 7143
---	------------------------	---

VOR/DME RWY 23

EVANSTON-UINTA COUNTY BURNS FIELD (E V W)

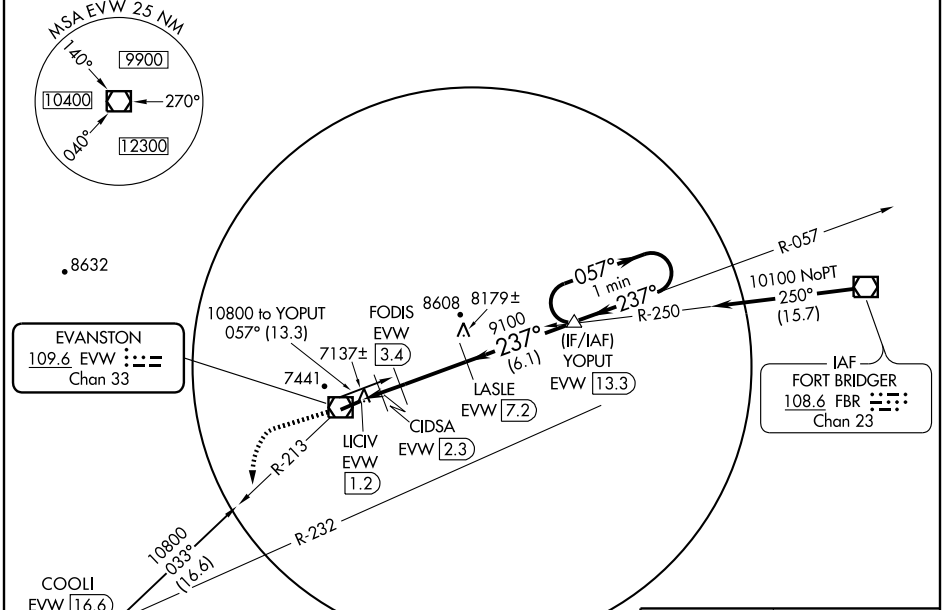
▼ For inoperative MALS, increase S-23 Cat. D visibility to 1 1/4 mile.
If local altimeter setting not received, procedure NA.

MALS

MISSED APPROACH: Climb to 7600 then climbing left turn to 12000 via EVW R-213 to COOLI/16.6 DME and hold, continue climb-in-hold to 12000.

ASOS 120.0	SALT LAKE CENTER 127.7 354.125	GCO 121.72	UNICOM 123.0 (CTAF)
----------------------	--	----------------------	-------------------------------

Procedure NA for arrivals at FBR VOR/DME via airway radials 213 CW 285.



NW-1, 22 OCT 2009 to 19 NOV 2009

NW-1, 22 OCT 2009 to 19 NOV 2009

