

# RNAV (GPS) RWY 5

EVANSTON-UINTA COUNTY BURNS FIELD (E V W)

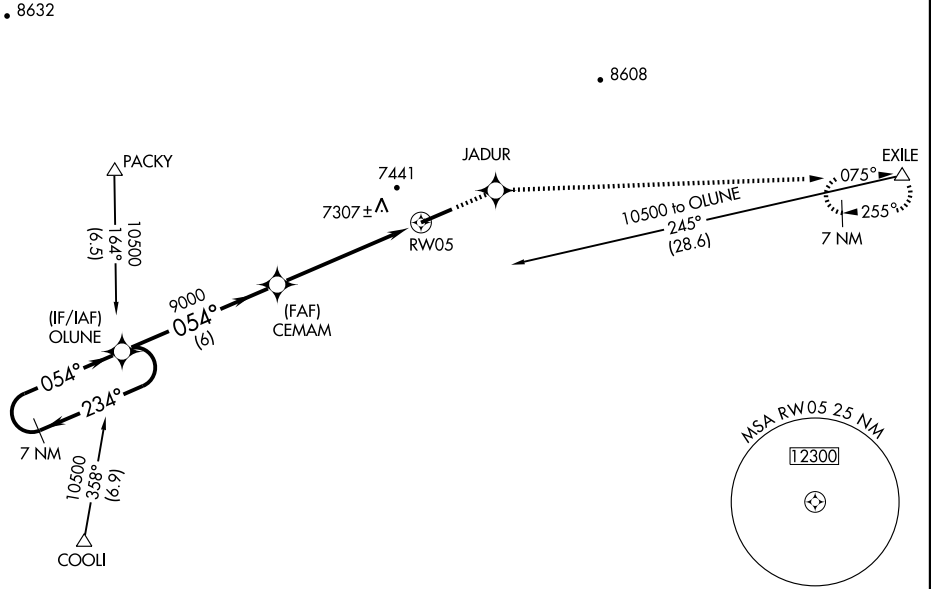
WAAS CH <b>78302</b> W05A	APP CRS <b>054°</b>	Rwy Idg TDZE Apt Elev	<b>7300</b> <b>7141</b> <b>7143</b>
---------------------------------	------------------------	-----------------------------	-------------------------------------------

**▽** If local altimeter setting not received, procedure NA.  
For uncompensated Baro-VNAV systems, LNAV/VNAV  
NA below -29°C (-20°F) or above 34°C (94°F).  
DME/DME RNP-0.3 NA.

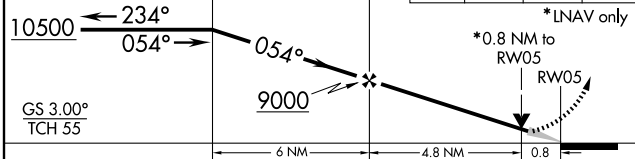
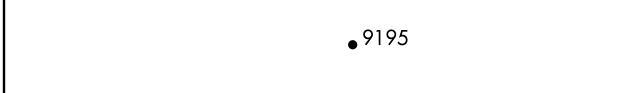
**MISSED APPROACH:** Climb to 12000 direct JADUR  
and via 075° track to EXILE and hold, continue  
climb-in-hold to 12000.

ASOS <b>120.0</b>	SALT LAKE CENTER <b>127.7 354,125</b>	GCO <b>121.72</b>	UNICOM <b>123.0 (CTAF) 0</b>
----------------------	------------------------------------------	----------------------	---------------------------------

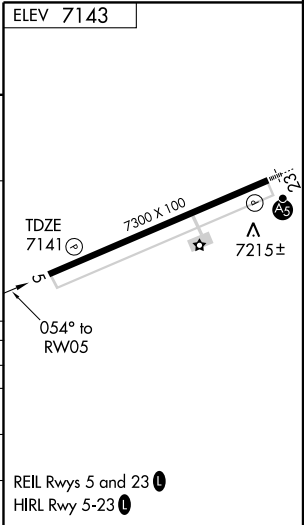
NW-1, 22 OCT 2009 to 19 NOV 2009



NW-1, 22 OCT 2009 to 19 NOV 2009



7 NM Holding Pattern	OLUNE	CEMAM	JADUR	EXILE
12000	9000	9000	12000	075° track
↑	✧	✧	✧	△
10500 ← 234°	→ 054°	054°	*LNAV only	
GS 3.00°			*0.8 NM to RWY 5	
TCH 55			RWY 5	
	6 NM	4.8 NM	0.8	
CATEGORY	A	B	C	D
LPV DA		7391-3/4	250 (300-3/4)	
LNAV/VNAV DA		7643-13/4	502 (500-13/4)	
LNAV MDA		7440-1	299 (300-1)	
CIRCLING	7580-13/4 437 (500-13/4)	7720-13/4 577 (600-13/4)	7760-13/4 617 (700-13/4)	7760-2 617 (700-2)



# RNAV (GPS) RWY 5