


WAAS CH 77905 W23A	APP CRS 234°	Rwy Idg TDZE Apt Elev	7300 7143 7143
--	------------------------	-----------------------------	---

RNAV (GPS) RWY 23

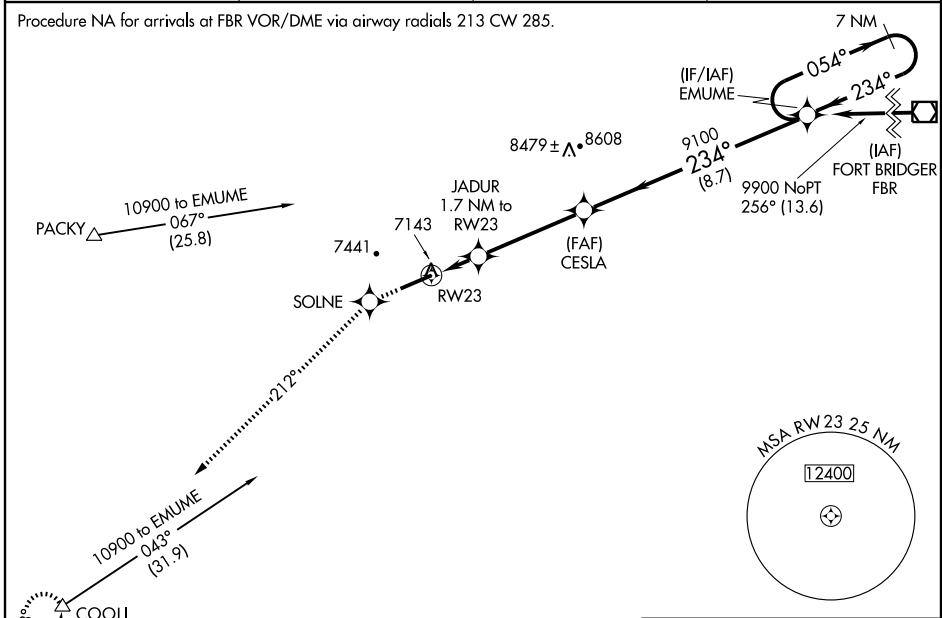
EVANSTON-UINTA COUNTY BURNS FIELD (E V W)

▼ For inoperative MALSR, increase LPV all Cats. visibility to 1, LNAV/VNAV Cat. D to 1 and LNAV Cat. D to 1½.
When local altimeter setting not received, procedure NA.
For uncompensated Baro-VNAV systems, LNAV/VNAV NA below -29°C (-20°F) or above 34°C (93°F). DME/DME RNP-0.3 NA.

MALSR
 MISSED APPROACH: Climb to 12000 direct SOLNE and via 212° track to COOLI and hold, continue climb-in-hold to 12000.

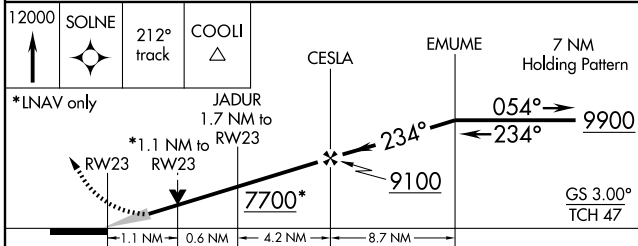
ASOS 120.0	SALT LAKE CENTER 127.7 354.125	GCO 121.72	UNICOM 123.0 (CTAF) 📻
----------------------	--	----------------------	--

Procedure NA for arrivals at FBR VOR/DME via airway radials 213 CW 285.

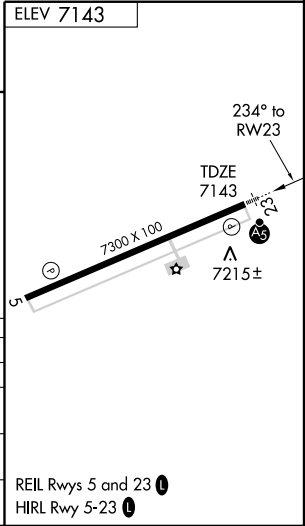


NW-1, 22 OCT 2009 to 19 NOV 2009

NW-1, 22 OCT 2009 to 19 NOV 2009



12000	SOLNE	212° track	COOLI	CESLA	EMUME	7 NM Holding Pattern
*LNAV only						
RWY 23		*1.1 NM to RWY 23		JADUR 1.7 NM to RWY 23	9100	9900
-1.1 NM		0.6 NM		4.2 NM	8.7 NM	GS 3.00° TCH 47
CATEGORY	A	B		C	D	
LPV DA	7393-½		250 (300-½)			
LNAV/VNAV DA	7443-½		300 (300-½)		7443-¾ 300 (300-¾)	
LNAV MDA	7520-½		377 (400-½)		7520-1 377 (400-1)	
CIRCLING	7580-1 437 (500-1)	7720-1 577 (600-1)	7760-1¾ 617 (700-¾)	7760-2 617 (700-2)		



REIL Rwy 5 and 23 **📻**
HIRL Rwy 5-23 **📻**