

VOR/DME RBS <b>116.8</b> Chan <b>115</b>	APP CRS <b>166°</b>	Rwy ldg <b>2609</b> TDZE <b>777</b> Apt Elev <b>779</b>
--	------------------------	---

# VOR or GPS RWY 18

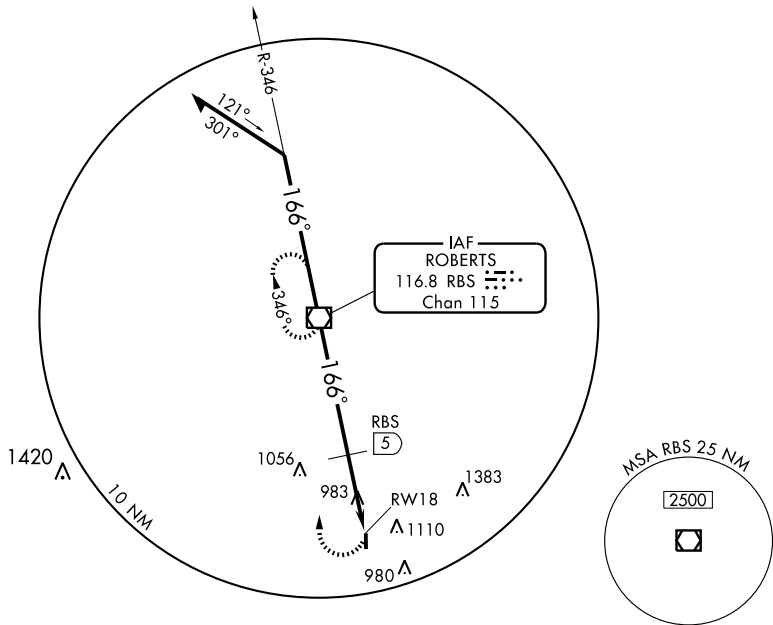
PAXTON (1C1)

**▼** Use Champaign altimeter setting; when not available, use Decatur altimeter setting and increase all MDAs 140 feet and increase all visibilities ½ mile.  
**▲ NA**

**MISSED APPROACH:** Climbing right turn to 2500 direct RBS VOR/DME and hold.

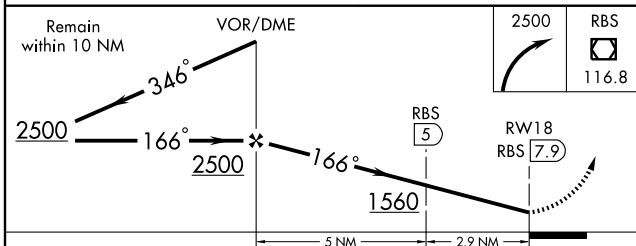
CHAMPAIGN APP CON \*  
**121.35 291.0**

UNICOM  
**122.8 (CTAF)**

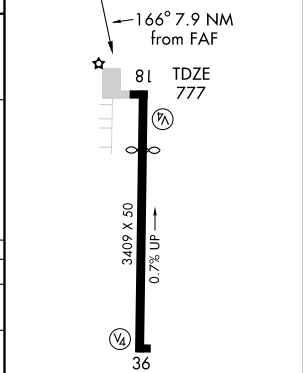


EC-3, 22 OCT 2009 to 19 NOV 2009

EC-3, 22 OCT 2009 to 19 NOV 2009



ELEV 779 Rwy 18 ldg 2609'



CATEGORY	A	B	C	D
S-18	1560-1 783 (800-1)	1560-1¼ 783 (800-1¼)	1560-2¼ 783 (800-2¼)	NA
CIRCLING	1560-1 780 (800-1)	1560-1¼ 780 (800-1¼)	1560-2¼ 780 (800-2¼)	NA
DME MINIMUMS				
S-18	1480-1	703 (700-1)	1480-2 703 (700-2)	NA
CIRCLING	1520-1	740 (800-1)	1520-2 740 (800-2)	NA

MIRL Rwy 18-36  
REIL Rwy 18

FAF to MAP 7.9 NM

Knots	60	90	120	150	180
Min:Sec	7:54	5:16	3:57	3:10	2:38