

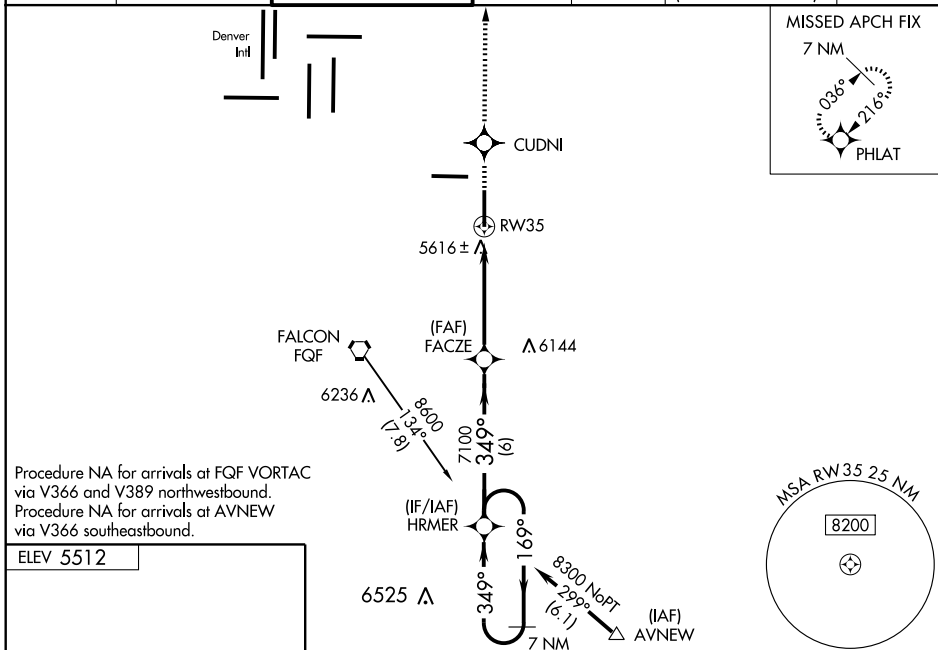
WAAS CH 93809 W35A	APP CRS 349°	Rwy Idg TDZE 5512 Apt Elev 5512	8000 5512 5512
--	------------------------	---	---

RNAV (GPS) RWY 35

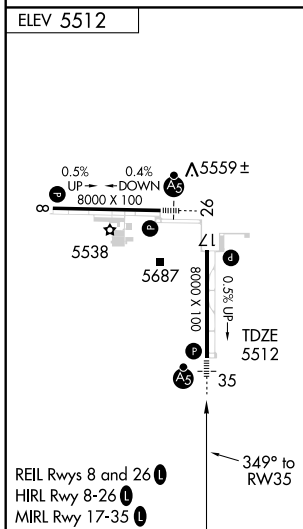
DENVER/ FRONT RANGE (F'TG)

<p>NA</p> <p>DME/DME RNP -0.3 NA. For uncompensated Baro-VNAV systems, LNAV/VNAV NA below -26°C (-14°F) or above 37°C (98°F). When local altimeter setting not received, use Denver Intl altimeter setting and increase all DA 29 feet and all MDA 40 feet, increase LPV all Cats visibility to ¾ mile, LNAV/VNAV all Cats visibility to 1 mile, LNAV Cat C visibility to 1½ mile, Cat D visibility to 1¾ mile. For inoperative MALSRL increase LPV all Cats visibility to 1 mile. For inoperative MALSRL when using Denver Intl altimeter setting increase LPV all Cats visibility to 1¼ mile. Baro-VNAV and VDP NA when using Denver Intl altimeter setting.</p>	<p>MALSRL</p>	<p>MISSED APPROACH: Climb to 8000 direct CUDNI then via 350° track to PHLAT and hold.</p>
---	---------------	---

ATIS 119.025	DENVER APP CON 128.25 371.95	FRONT RANGE TOWER* 120.2 (CTAF) 0	GND CON 124.7	CLNC DEL 124.7	DENVER CLNC DEL 121.75 (When tower closed)	UNICOM 122.95
------------------------	--	---	-------------------------	--------------------------	---	-------------------------



Procedure NA for arrivals at FQF VORTAC via V366 and V389 northwestbound.
 Procedure NA for arrivals at AVNEW via V366 southeastbound.



8000	CUDNI	350° track	PHLAT	7 NM Holding Pattern	
LNAV only		1.9 NM to RW35	FACZE	HRMER 7 NM Holding Pattern	
RW35		2.9 NM	6 NM	8300	
CATEGORY		A	B	C	D
LPV DA		5828-½		316 (400-½)	
LNAV/VNAV DA		5891-¾		379 (400-¾)	
LNAV MDA		6180-½ 668 (700-½)		6180-1¼ 668 (700-1¼)	
CIRCLING		6180-1 668 (700-1)		6180-1½ 668 (700-1½)	

SW-1, 22 OCT 2009 to 19 NOV 2009

SW-1, 22 OCT 2009 to 19 NOV 2009