

DENVER, COLORADO

AL-6851 (FAA)

WAAS CH 82209 W17A	APP CRS 169°	Rwy Idg TDZE Apt Elev	8000 5488 5512
--	------------------------	-----------------------------	---

RNAV (GPS) RWY 17

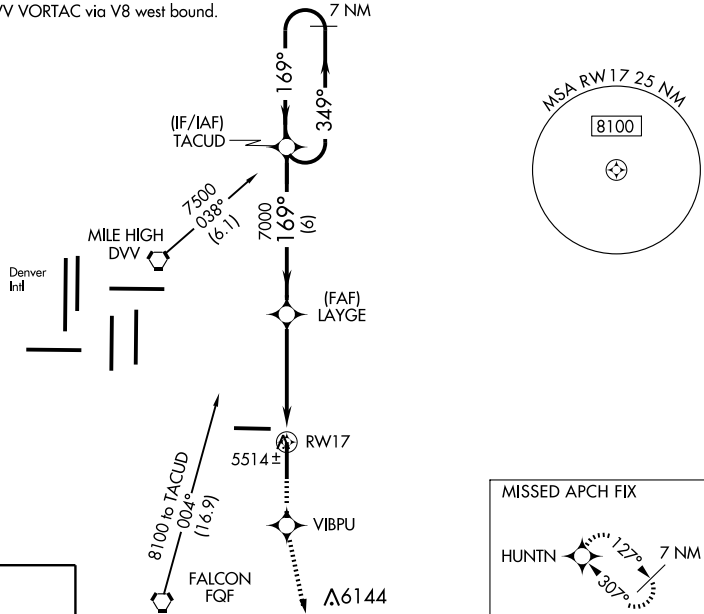
DENVER/FRONT RANGE (F'TG)

NA DME/DME RNP -0.3 NA. For uncompensated Baro-VNAV systems, LNAV/VNAV NA below -26°C (-14°F) or above 37°C (98°F). When local altimeter setting not received use Denver Intl altimeter setting and increase all DA 29 feet and all MDA 40 feet. Increase LNAV visibility Cat D to 1½ mile: Baro-VNAV and VDP NA when using Denver Intl altimeter setting.

MISSED APPROACH: Climb to 8500 direct VIBPU and via 157° track to HUNTN and hold.

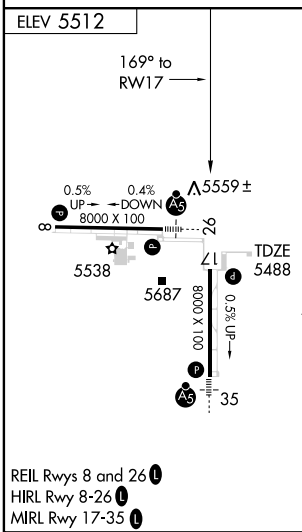
ATIS 119.025	DENVER APP CON 128.25 371.95	FRONT RANGE TOWER * 120.2 (CTAF)	GND CON 124.7	CLNC DEL 124.7	DENVER CLNC DEL 121.75 (When tower closed)	UNICOM 122.95
------------------------	--	--	-------------------------	--------------------------	---	-------------------------

Procedure NA for arrivals at FQF VORTAC via V160 southwest bound.
Procedure NA for arrivals at DVV VORTAC via V8 west bound.



SW-1, 22 OCT 2009 to 19 NOV 2009

SW-1, 22 OCT 2009 to 19 NOV 2009



	7 NM Holding Pattern	TACUD	LAYGE	8500	VIBPU	157° track	HUNTN
							LNAV only*
		7000 ← 349°	169° →		1.2 NM to *RWY17		
		°GS 3.00	TCH 50				
		6 NM	3.4 NM	1.2			
CATEGORY	A	B	C	D			
LPV DA		5738-1	250 (300-1)				
LNAV/ VNAV DA		5839-1¼	351 (400- 1¼)				
LNAV MDA	5900-1	412 (500-1)	5900-1¼ 412 (500-1¼)	5900-1¼ 412 (500-1¼)			
CIRCLING	5960-1 448 (500-1)	5980-1 468 (500-1)	5980-1½ 468 (500-1½)	6080-2 568 (600-2)			

DENVER, COLORADO
Orig 09015

39°37'N-104°33'

DENVER/ FRONT RANGE (F'TG) RNAV (GPS) RWY 17