

# PIKES FOUR DEPARTURE

SL-6851 (FAA)

DENVER/ FRONT RANGE (F'TG)  
DENVER, COLORADO

ATIS  
119.025  
CLNC DEL  
124.7  
GND CON  
124.7  
FRONT RANGE TOWER ★  
120.2  
DENVER DEP CON  
128.25 371.95  
DENVER CLNC DEL  
121.75  
(When tower closed)

TAKE-OFF MINIMUMS  
All runways standard.

DENVER  
117.9 DEN  
Chan 126  
N39°48.75'-W104°39.65'

ADANE  
N38°54.91'  
W104°23.94'

HUGO  
112.1 HGO  
Chan 58

BLACK FOREST  
112.5 BRK  
Chan 72

DRAKE  
N38°36.40'  
W104°24.85'

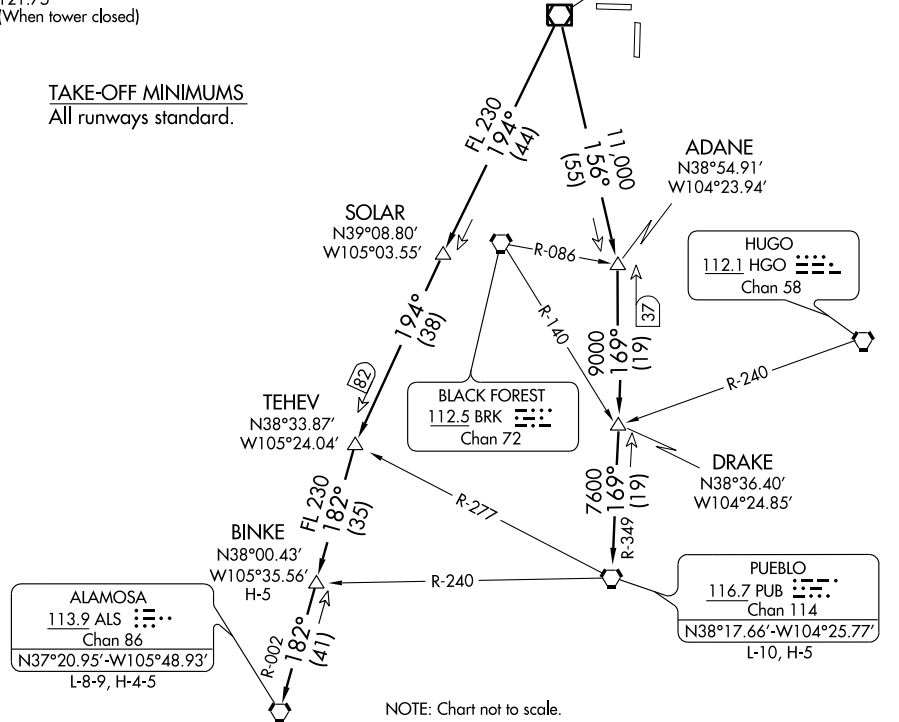
PUEBLO  
116.7 PUB  
Chan 114  
N38°17.66'-W104°25.77'  
L-10, H-5

ALAMOSA  
113.9 ALS  
Chan 86  
N37°20.95'-W105°48.93'  
L-8-9, H-4-5

SOLAR  
N39°08.80'  
W105°03.55'

TEHEV  
N38°33.87'  
W105°24.04'

BINKE  
N38°00.43'  
W105°35.56'  
H-5



SW-1, 22 OCT 2009 to 19 NOV 2009

SW-1, 22 OCT 2009 to 19 NOV 2009

## DEPARTURE ROUTE DESCRIPTION

Fly assigned heading and altitude for radar vectors to assigned transition. Expect filed altitude 10 minutes after departure.

LOST COMMUNICATIONS: If no transmissions are received within one minute after departure, maintain assigned heading until 7000 feet, then climb to filed altitude via direct DEN VOR/DME, thence via assigned transition. If filed altitude is above 10,000 feet, cross DEN VOR/DME at or above 11,000 feet.

ALAMOSA TRANSITION (PIKES4.ALS): From over DEN VOR/DME via DEN R-194 and ALS R-002 to ALS VORTAC.

BINKE TRANSITION (PIKES4.BINKE): From over DEN VOR/DME via DEN R-194 and ALS R-002 to BINKE INT.

PUEBLO TRANSITION (PIKES4.PUB): From over DEN VOR/DME via DEN R-156 and PUB R-349 to PUB VORTAC.

# PIKES FOUR DEPARTURE