

DENVER, COLORADO

AL-6851 (FAA)

LOC/DME I-FZR 110.9 Chan 46	APP CRS 169°	Rwy Idg TDZE Apt Elev	8000 5488 5512
--	------------------------	-----------------------------	---

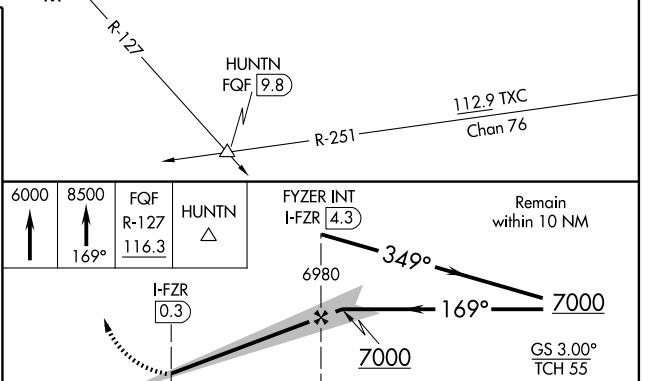
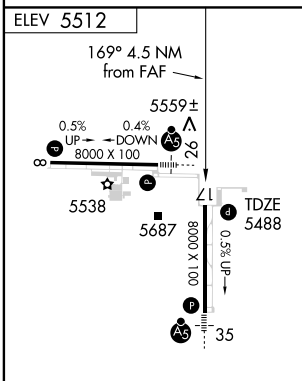
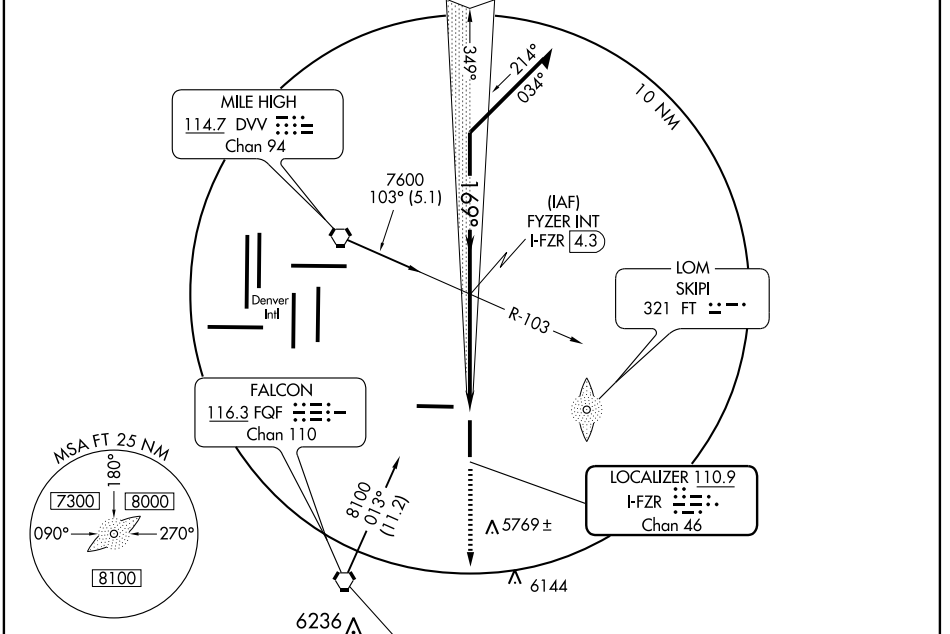
ILS or LOC RWY 17

DENVER/ FRONT RANGE (F'TG)

NA When local altimeter not received use Denver Intl altimeter setting and increase all DH/MDAs 40 feet.

MISSED APPROACH: Climb to 6000, continue climbing to 8500 via heading 169° and QFQ VORTAC R-127 to HUNTN Int.

ATIS 119.025	DENVER APP CON 128.25 371.95	FRONT RANGE TOWER* 120.2 (CTAF) 0	GND CON 124.7	CLNC DEL 124.7	DENVER CLNC DEL 121.75 (When tower closed)	UNICOM 122.95
------------------------	--	---	-------------------------	--------------------------	---	-------------------------



REIL Rwy 8 and 26		HIRL Rwy 8-26		MIRL Rwy 17-35	
FAF to MAP 4 NM					
Knots	60	90	120	150	180
Min:Sec	4:00	2:40	2:00	1:36	1:20
CATEGORY	A		B		C
S-ILS 17	5688- ³ / ₄ 200 (200- ³ / ₄)				
S-LOC 17	5820-1 332 (400-1)				
CIRCLING	5960-1 448 (500-1)	5980-1 468 (500-1)	5980-1 ¹ / ₂ 468 (500-1 ¹ / ₂)	6080-2 568 (600-2)	

DENVER, COLORADO
Orig-A 09183

39°47'N-104°33'W

DENVER/ FRONT RANGE (F'TG)

ILS or LOC RWY 17

SW-1, 22 OCT 2009 to 19 NOV 2009

SW-1, 22 OCT 2009 to 19 NOV 2009