

TINIAN ISLAND, CQ

AL-6848 (FAA)

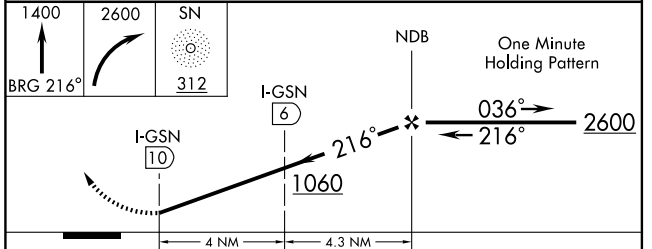
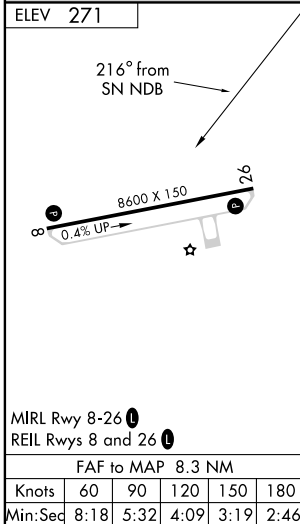
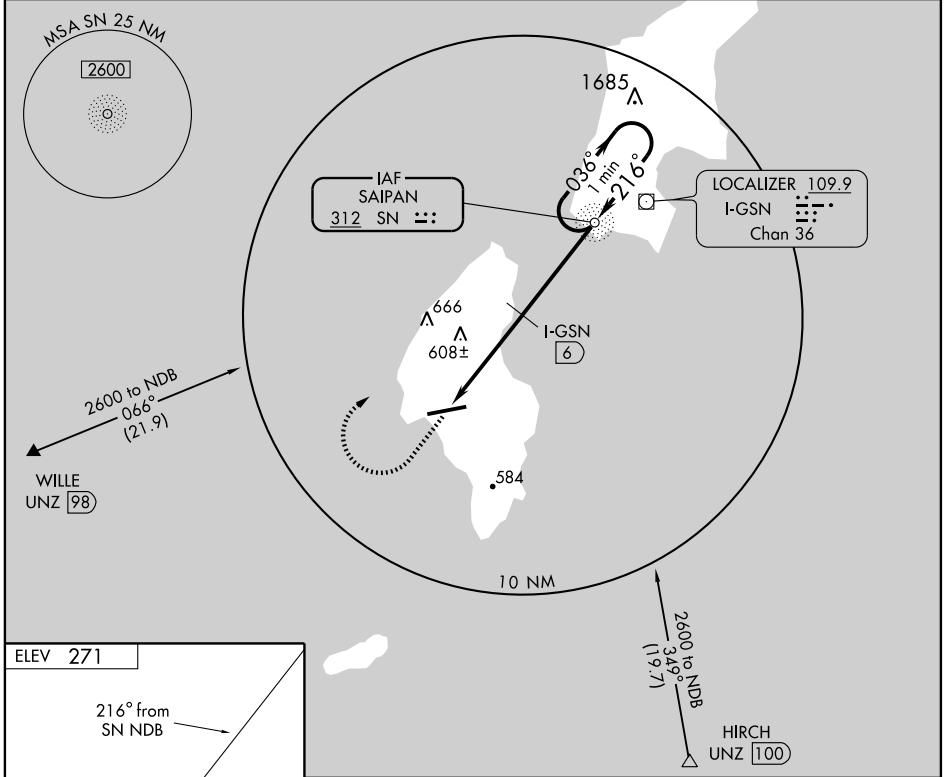
NDB-A

TINIAN INTL (TNI)(PGWT)

SN NDB 312	APP CRS 216°	Rwy Idg TDZE Apt Elev	N/A N/A 271
----------------------	------------------------	-----------------------------	--

⚠ MISSED APPROACH: Climb to 1400 via 216° bearing from SN NDB then climbing right turn to 2600 direct SN NDB and hold.

GUAM APP CON **118.4 290.5** SAIPAN RADIO **123.6 (CTAF) 0**



CATEGORY	A	B	C	D
CIRCLING	1060-1 789 (800-1)	1060-1¼ 789 (800-1¼)	1060-2¼ 789 (800-2¼)	1060-2½ 789 (800-2½)
DME MINIMUMS				
CIRCLING	940-1 669 (700-1)	940-2 669 (700-2)	940-2 669 (700-2)	940-2¼ 669 (700-2¼)

TINIAN ISLAND, CQ
Amdt 1C 09015

15°00'N-145°37'E

TINIAN INTL (TNI)(PGWT)
NDB-A

PAC, 22 OCT 2009 to 17 DEC 2009

PAC, 22 OCT 2009 to 17 DEC 2009